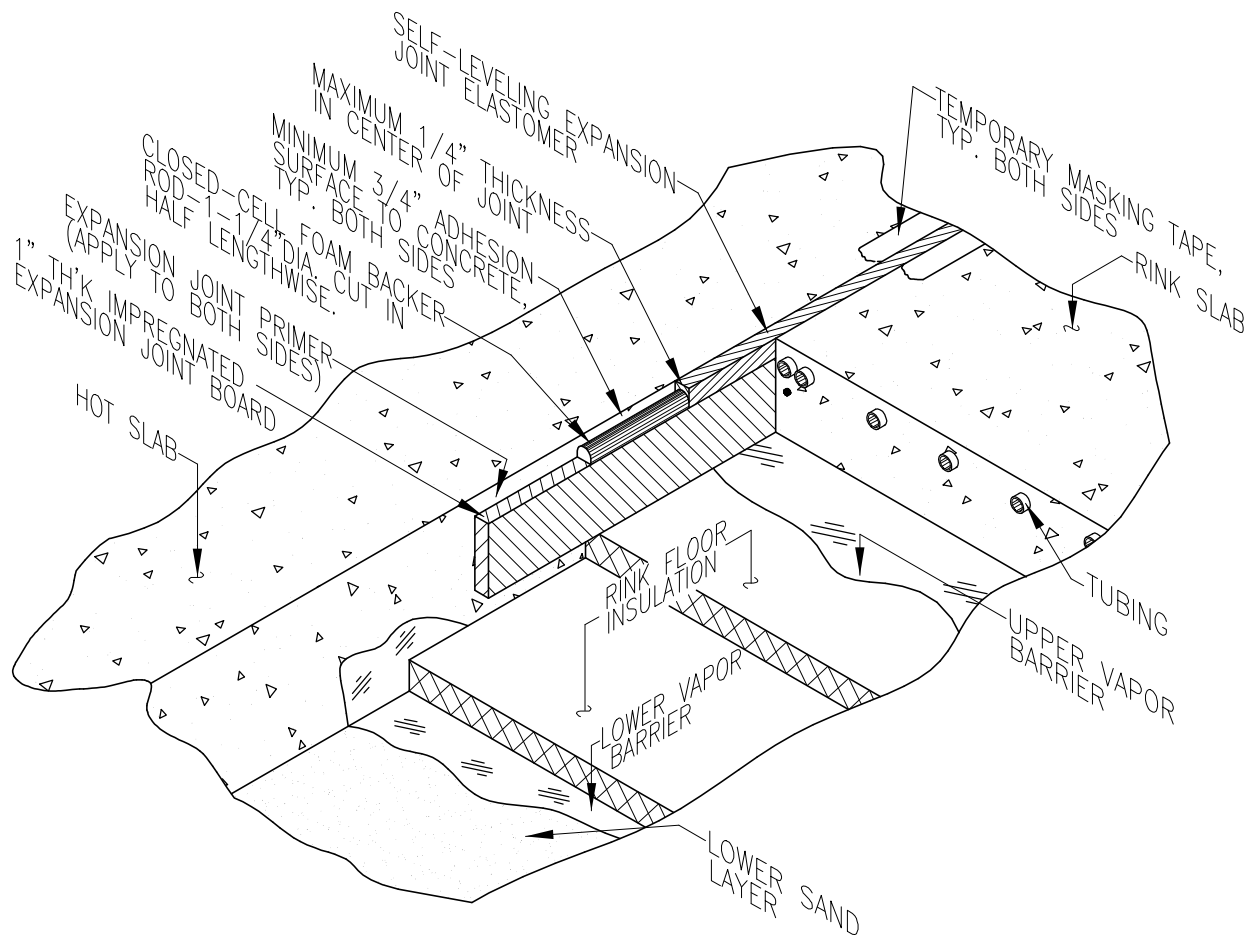


Concrete Rink Floor Isometric

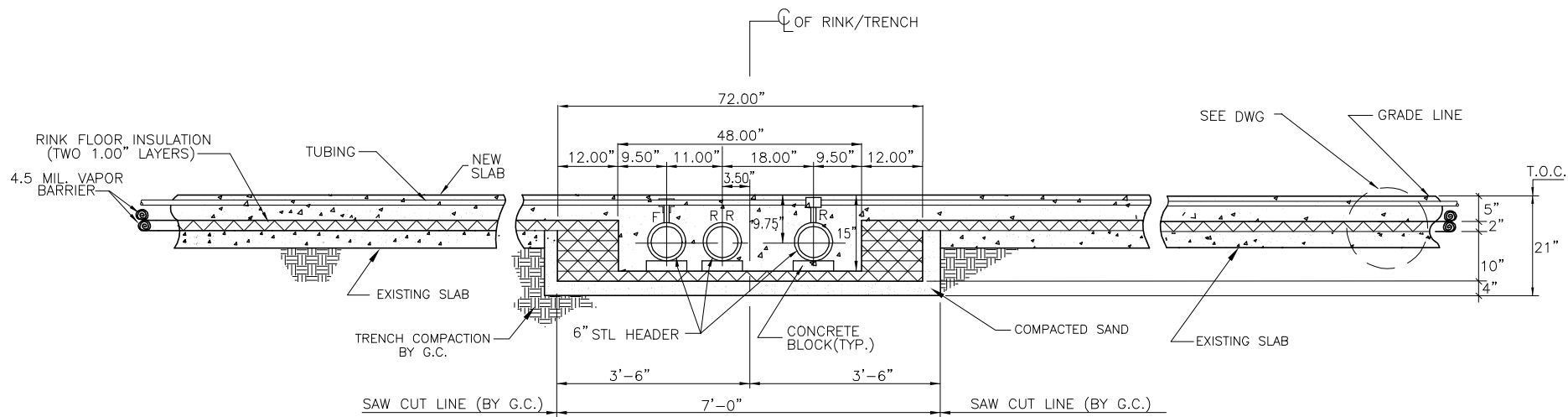
Everything Ice™

www.everything-ice.com

(888)-543-0921



EXPANSION JOINT DETAIL
 CONCRETE FLOOR



HEADER TRENCH FLOOR CROSS SECTION

RETROFIT CONCRETE RINK FLOOR
 SLAB-ON-SLAB W/2" INSULATION - SEASONAL RINK

NOTES:

1. ALL ELEVATIONS MEASURED FROM LOWEST POINT IN TOP OF CURB(T.O.C.)
2. EXCAVATION OF MAIN HEADER BY G.C.
3. TRENCH ROUGH GRADE (BY G.C.) TO BE FINISHED TO +0/-1" TOLERANCE.
4. TRENCH COMPACTION (BY G.C.) MINIMUM 98% BY MODIFIED PROCTOR.
5. SEE CURB DWG FOR ADDITIONAL INFO.

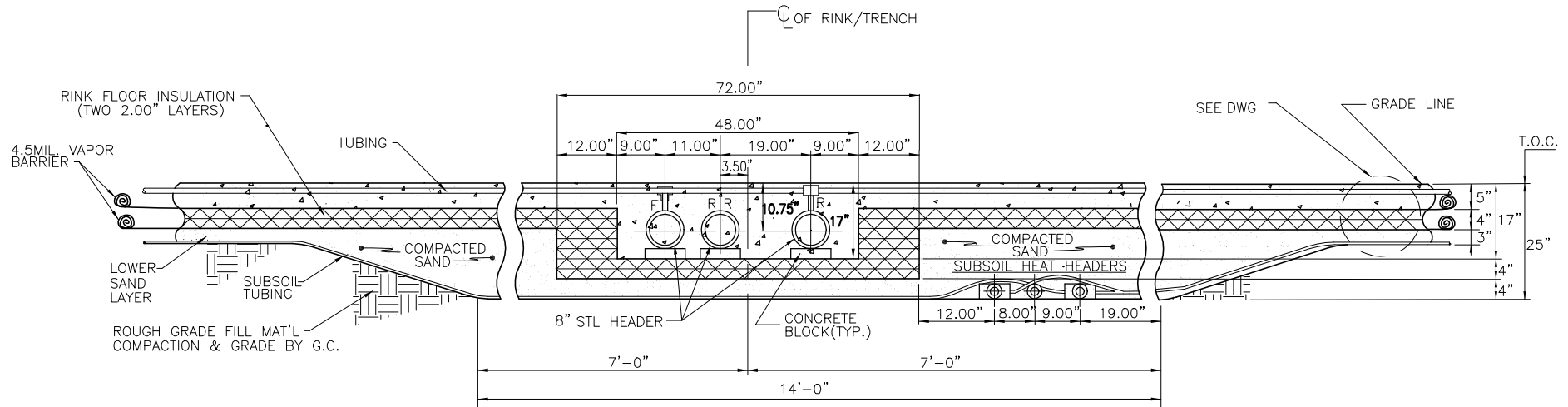


www.everything-ice.com

(888)-543-0921

NOTES:

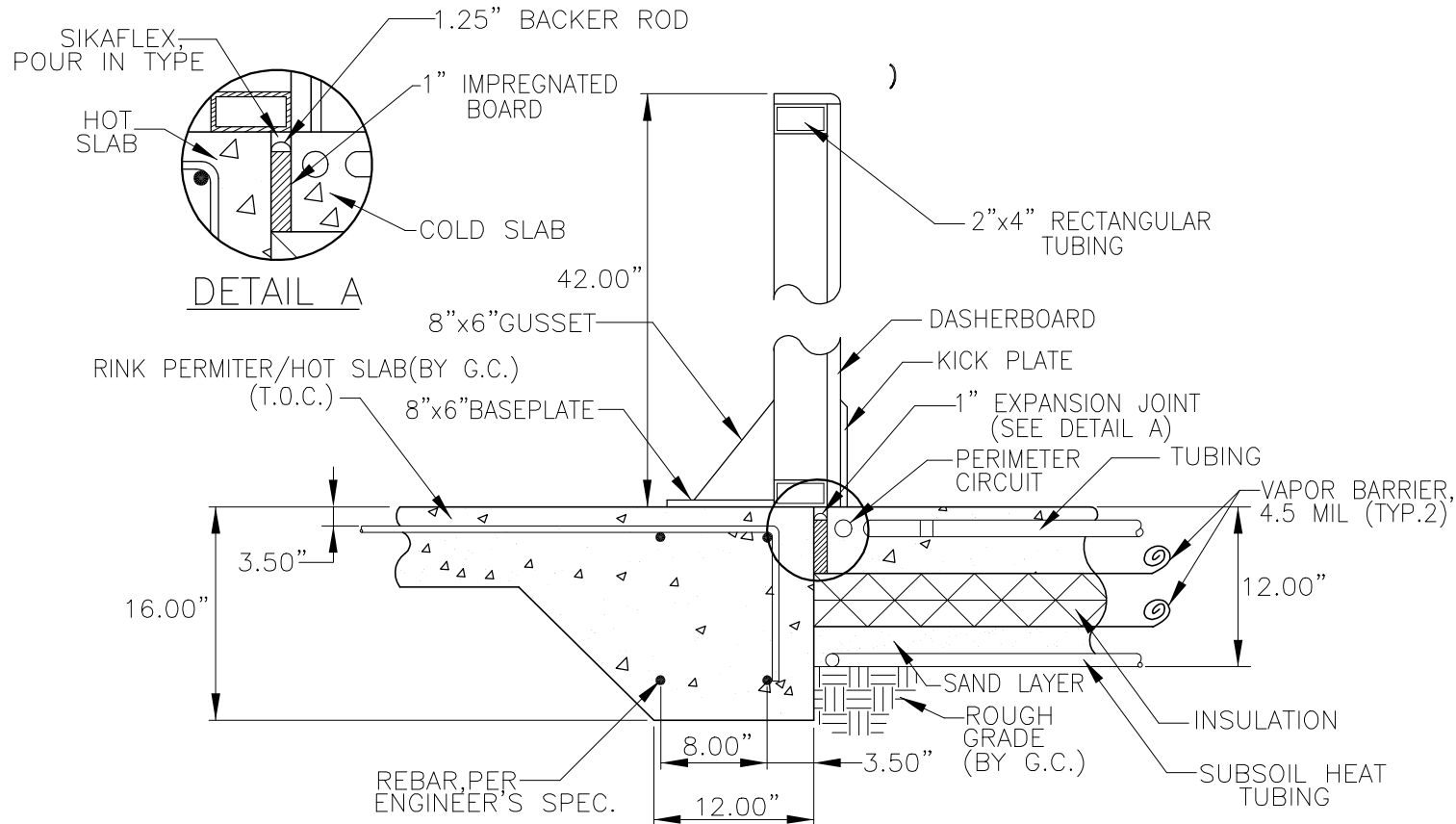
1. ALL ELEVATIONS MEASURED FROM LOWEST POINT IN TOP OF CURB(T.O.C.)
2. EXCAVATION OF MAIN HEADER BY G.C.
3. RINK ROUGH GRADE (BY G.C.) TO BE FINISHED TO +0/-1 TOLERANCE.
4. ROUGH GRADE COMPACTION (BY G.C.) MINIMUM 98% BY MODIFIED PROCTOR.
5. SEE CURB DWG. FOR ADDITIONAL INFO.



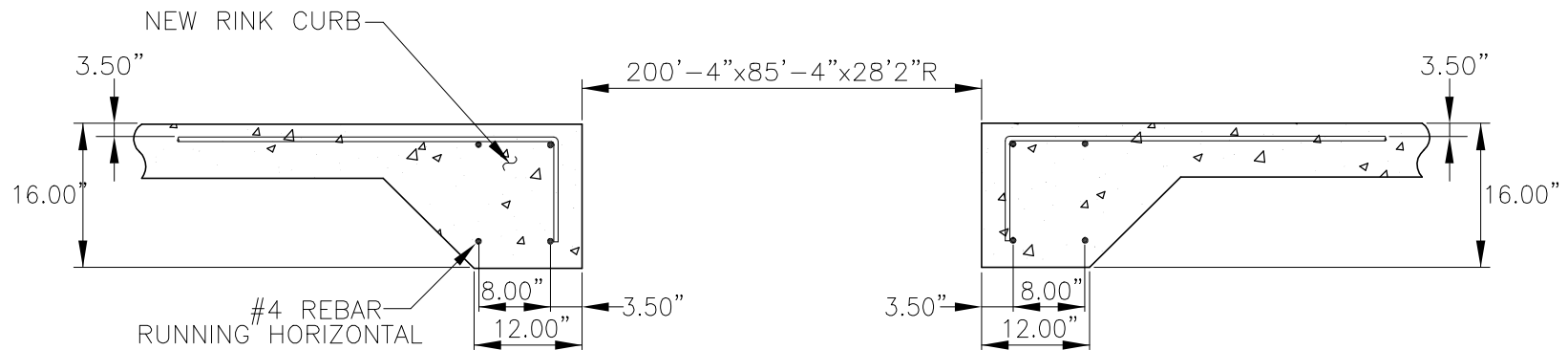
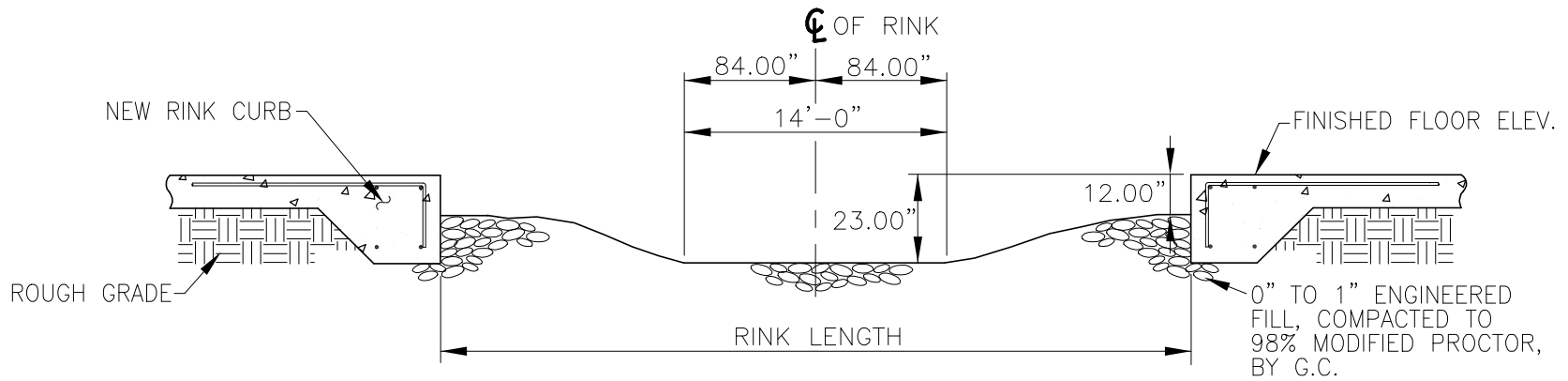
HEADER TRENCH FLOOR CROSS SECTION
 CONCRETE RINK FLOOR - 8" HEADER

NOTE:

- 1) ALL ELEV. MEASURED FROM LOWEST POINT IN TOP OF CURB (T.O.C.)
- 2) PERIMETER CONCRETE MIN. 4000psi @ 28 DAYS. ELEV. $\pm 1/8"$ /10'-0"; $3/8"$ OVERALL.
- 3) SEE FLOOR DWG FOR ADDITIONAL INFO.



PERIMETER CURB/DASHER CROSS SECTION
CONCRETE FLOOR



NEW CONCRETE RINK PERIMETER CURB
 MIN. 4000 PSI @ 28 DAYS. FINISH TO $\pm 1/8"$
 IN 10'-0".

EXCAVATION & CURB SECTION
 CONCRETE FLOOR



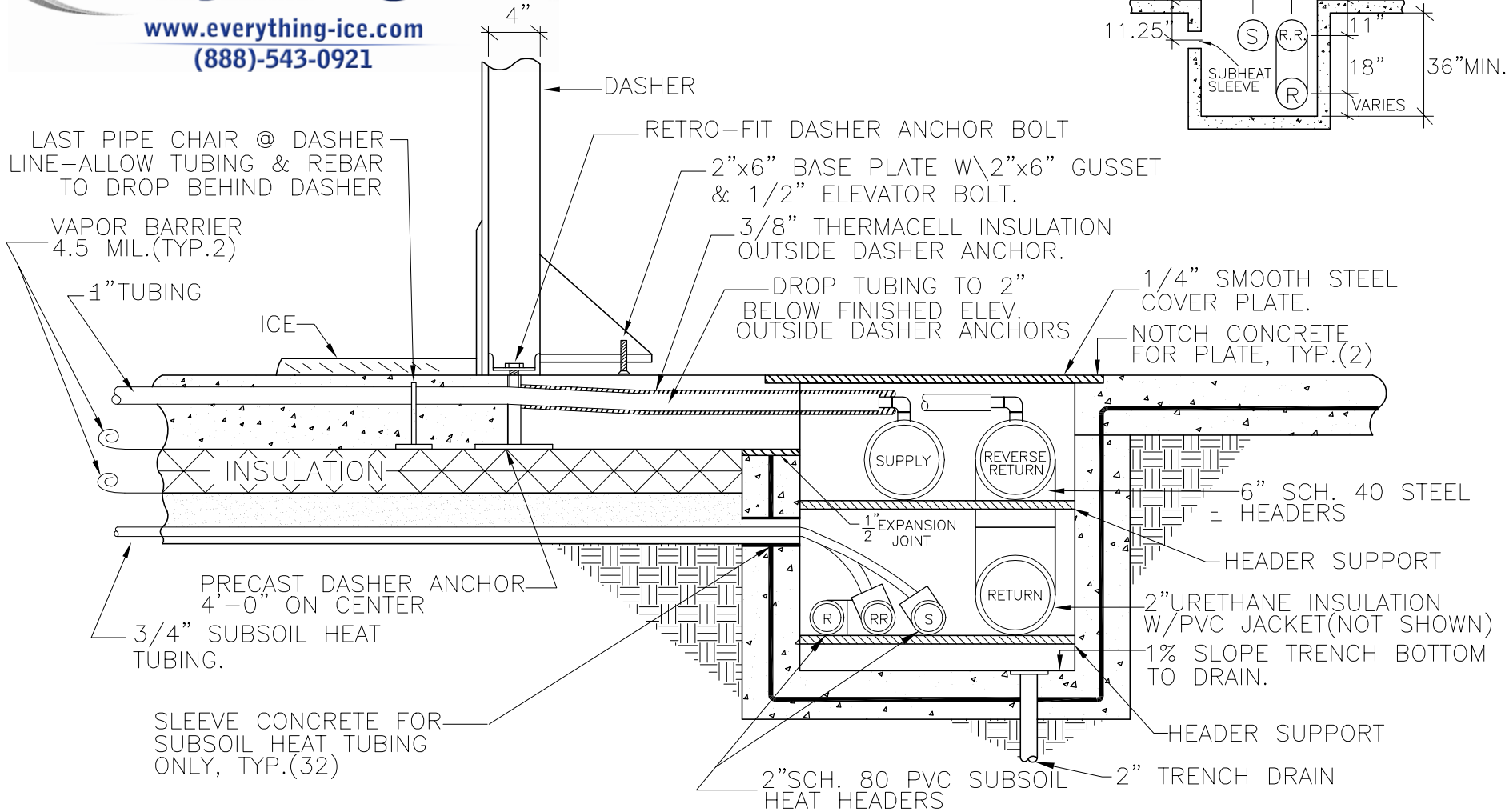
www.everything-ice.com

(888)-543-0921



www.everything-ice.com

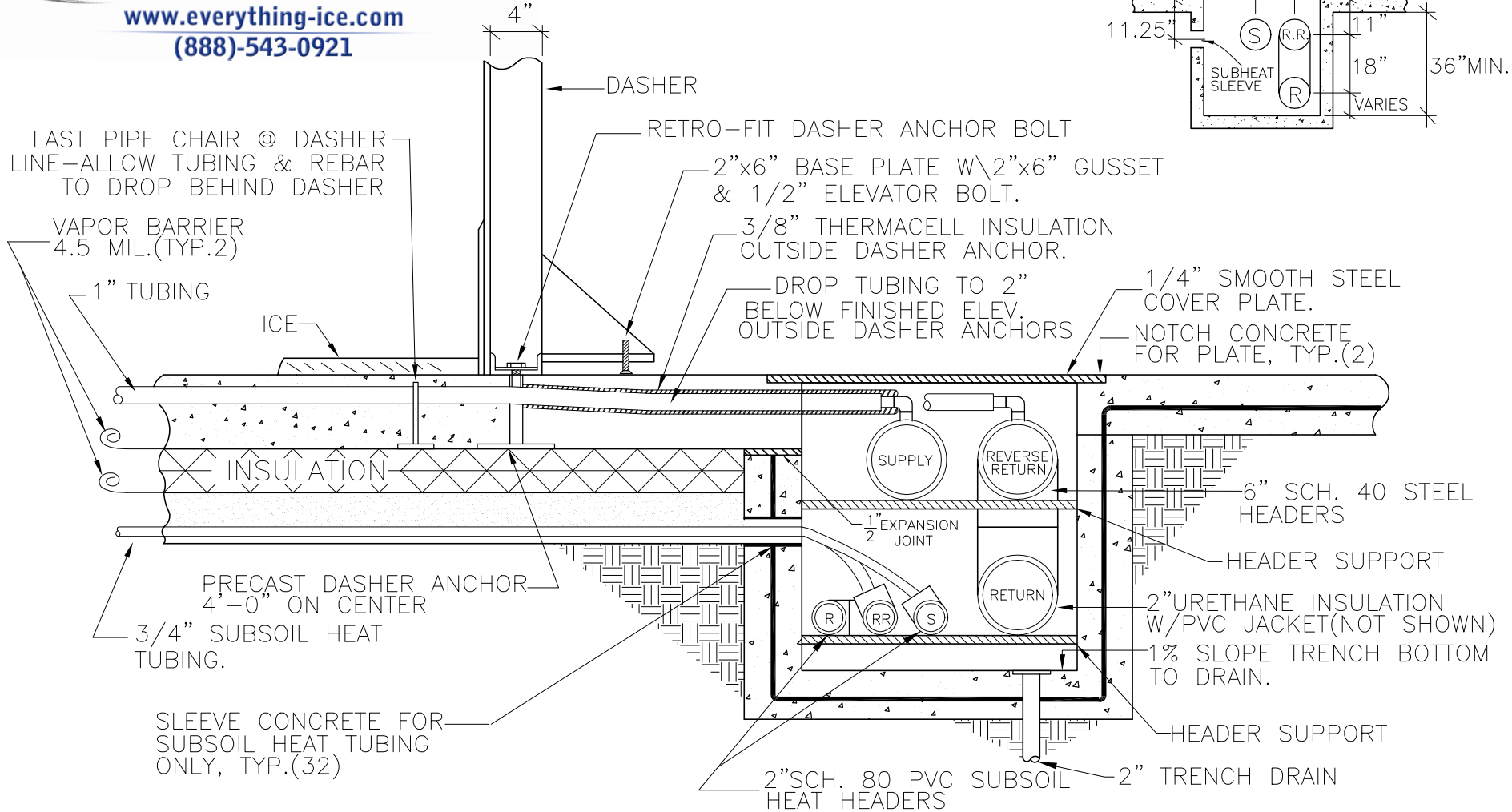
(888)-543-0921



**END HEADER CROSS SECTION - 6" STEEL
CONCRETE RINK FLOOR**



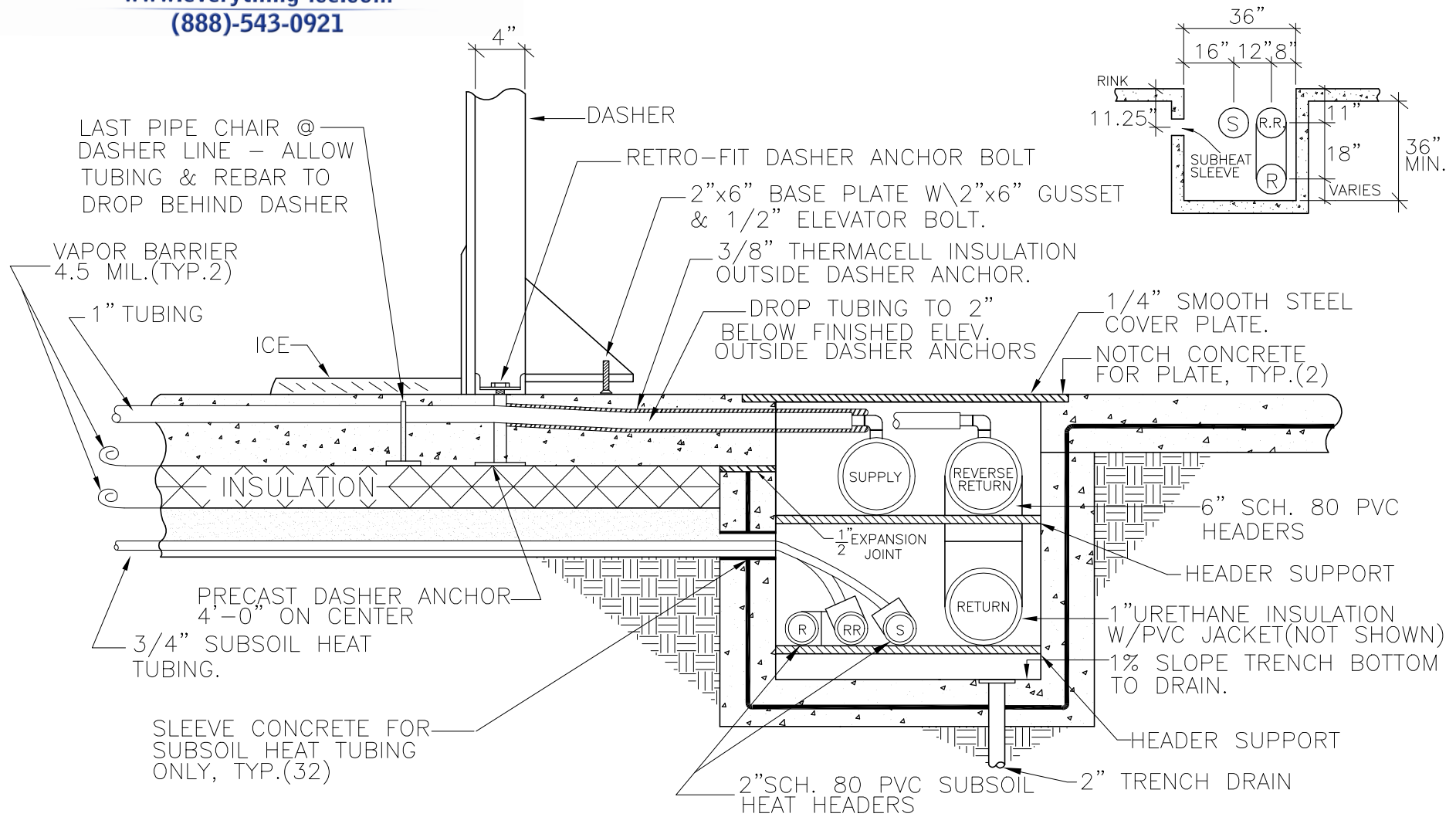
www.everything-ice.com
(888)-543-0921



**END HEADER CROSS SECTION - 6" STEEL
CONCRETE RINK FLOOR**



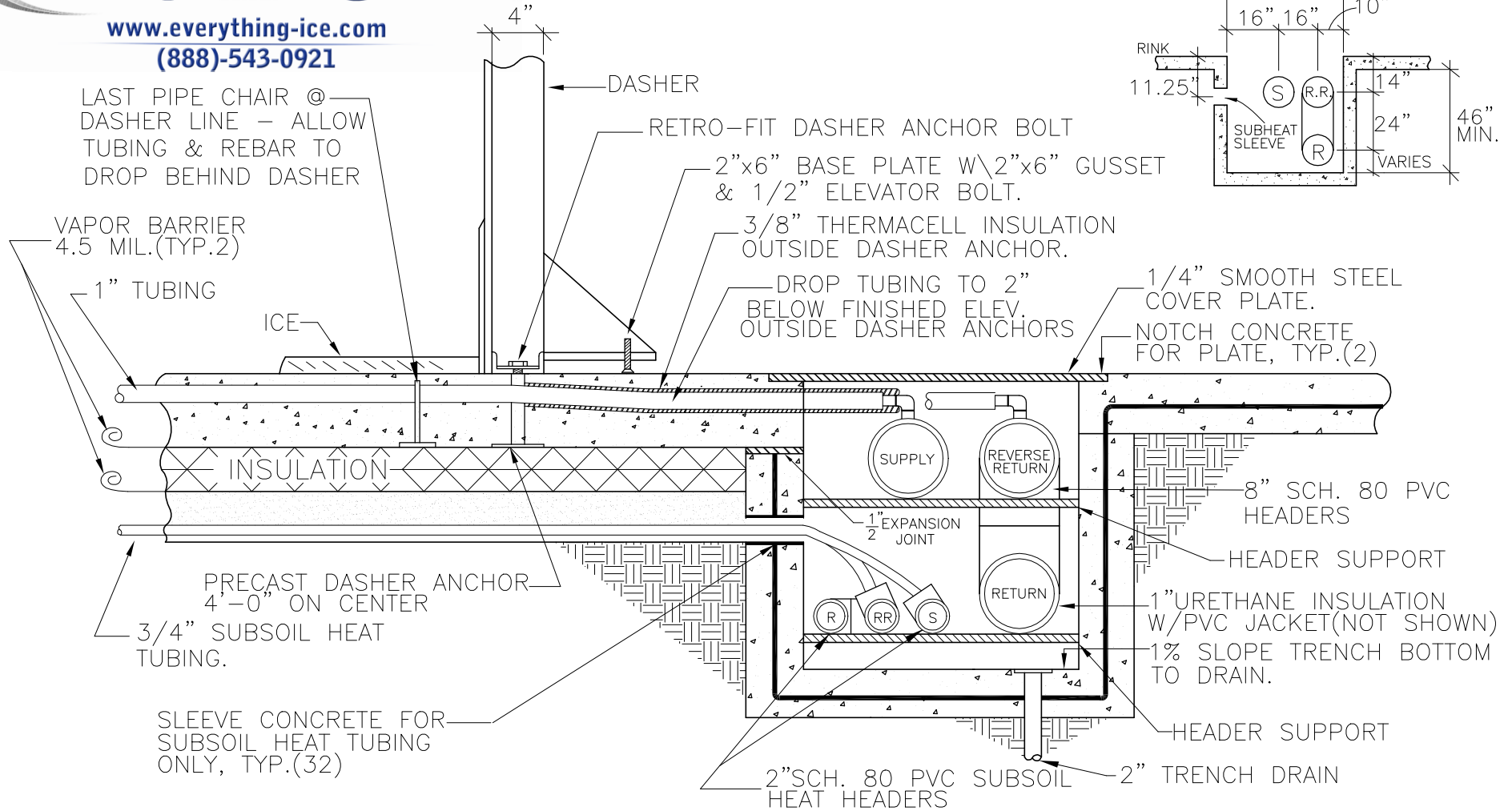
www.everything-ice.com
(888)-543-0921



END HEADER CROSS SECTION - 6" PVC
CONCRETE RINK FLOOR



www.everything-ice.com
(888)-543-0921

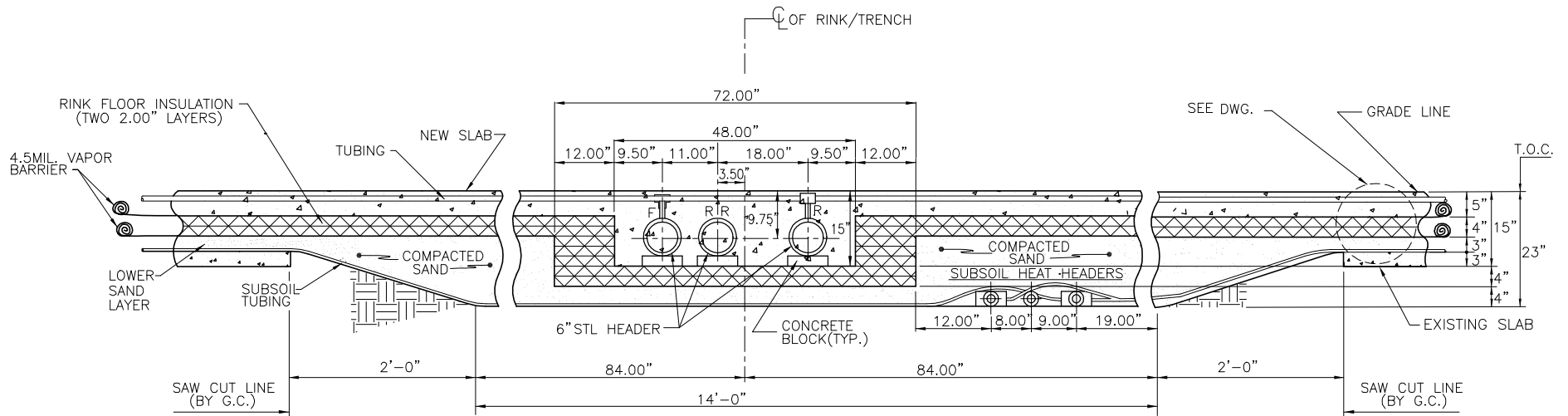


**END HEADER CROSS SECTION - 8" PVC
CONCRETE RINK FLOOR**



www.everything-ice.com

(888)-543-0921



NOTES:

1. ALL ELEVATIONS MEASURED FROM LOWEST POINT IN TOP OF CURB(T.O.C.)
2. EXCAVATION OF MAIN HEADER TRENCH BY G.C.
3. TRENCH ROUGH GRADE (BY G.C.) TO BE FINISHED TO +0/-1" TOLERANCE.
4. TRENCH COMPACTION (BY G.C.) MINIMUM 98% BY MODIFIED PROCTOR.
5. SEE CURB DWG. FOR ADDITIONAL INFO.

HEADER TRENCH FLOOR CROSS SECTION
 RETROFIT CONCRETE RINK FLOOR
 SLAB-ON-SLAB W/4" INSULATION & SUBSOIL HEAT

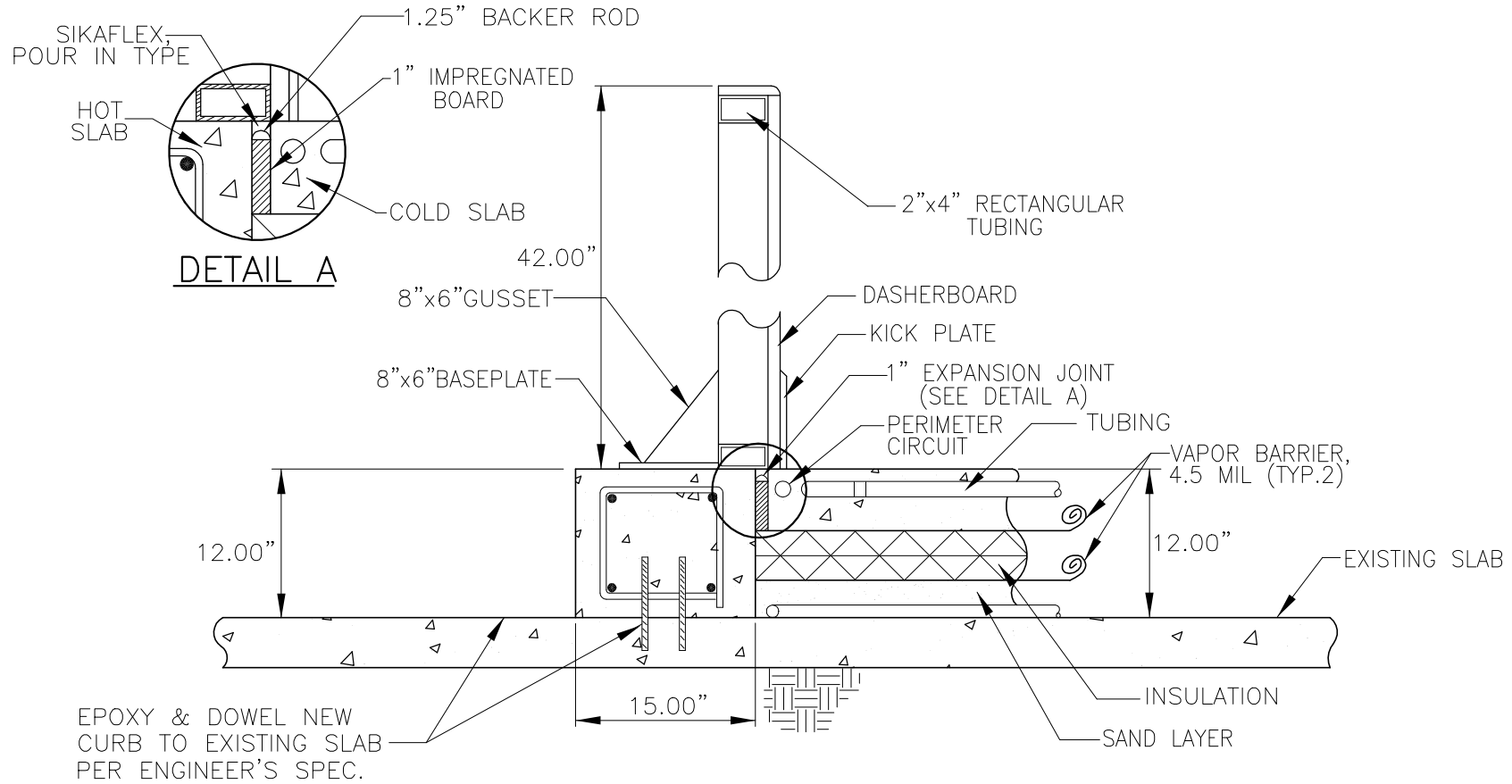
NOTE:

- 1) ALL ELEV. MEASURED FROM LOWEST POINT IN TOP OF CURB (T.O.C.)
- 2) PERIMETER CONCRETE MIN. 4000psi @ 28 DAYS. ELEV. ±1/8" / 10'-0"; 3/8" OVERALL.
- 3) SEE FLOOR DWG FOR ADDITIONAL INFO.



www.everything-ice.com

(888)-543-0921



PERIMETER CURB/DASHER CROSS SECTION
RETROFIT CONCRETE RINK FLOOR
SLAB-ON-SLAB FLOOR W/4" INSULATION & SUBSOIL HEAT

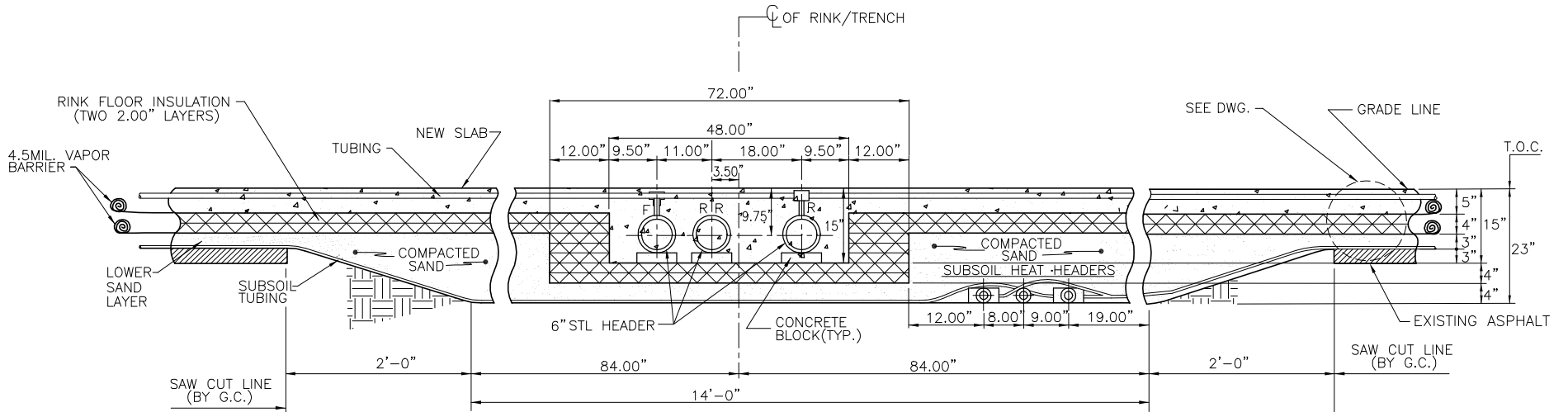
NOTES:

1. ALL ELEVATIONS MEASURED FROM LOWEST POINT IN TOP OF CURB(T.O.C.)
2. EXCAVATION OF MAIN HEADER TRENCH BY G.C.
3. TRENCH ROUGH GRADE (BY G.C.) TO BE FINISHED TO +0/-1" TOLERANCE.
4. TRENCH COMPACTION (BY G.C.) MINIMUM 98% BY MODIFIED PROCTOR.
5. SEE CURB DWG. FOR ADDITIONAL INFO.



www.everything-ice.com

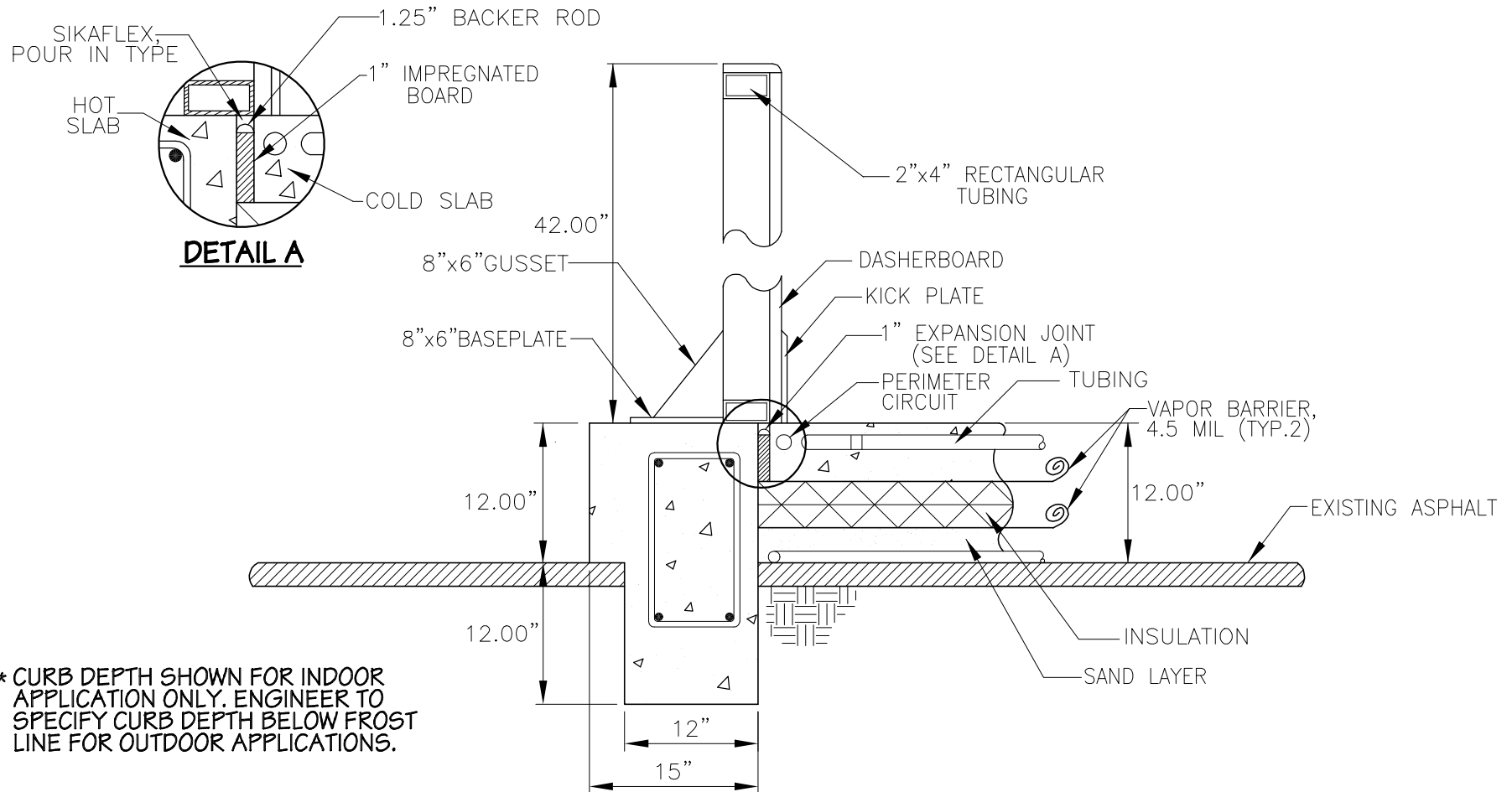
(888)-543-0921



HEADER TRENCH FLOOR CROSS SECTION
 RETROFIT CONCRETE RINK FLOOR
 SLAB-ON-ASPHALT W/4" INSULATION & SUBSOIL HEAT

NOTE:

- 1) ALL ELEV. MEASURED FROM LOWEST POINT IN TOP OF CURB (T.O.C.)
- 2) PERIMETER CONCRETE MIN. 4000psi @ 28 DAYS. ELEV. $\pm 1/8"$ /10'-0"; $3/8"$ OVERALL.
- 3) SEE FLOOR DWG# FOR ADDITIONAL INFO.



* CURB DEPTH SHOWN FOR INDOOR APPLICATION ONLY. ENGINEER TO SPECIFY CURB DEPTH BELOW FROST LINE FOR OUTDOOR APPLICATIONS.

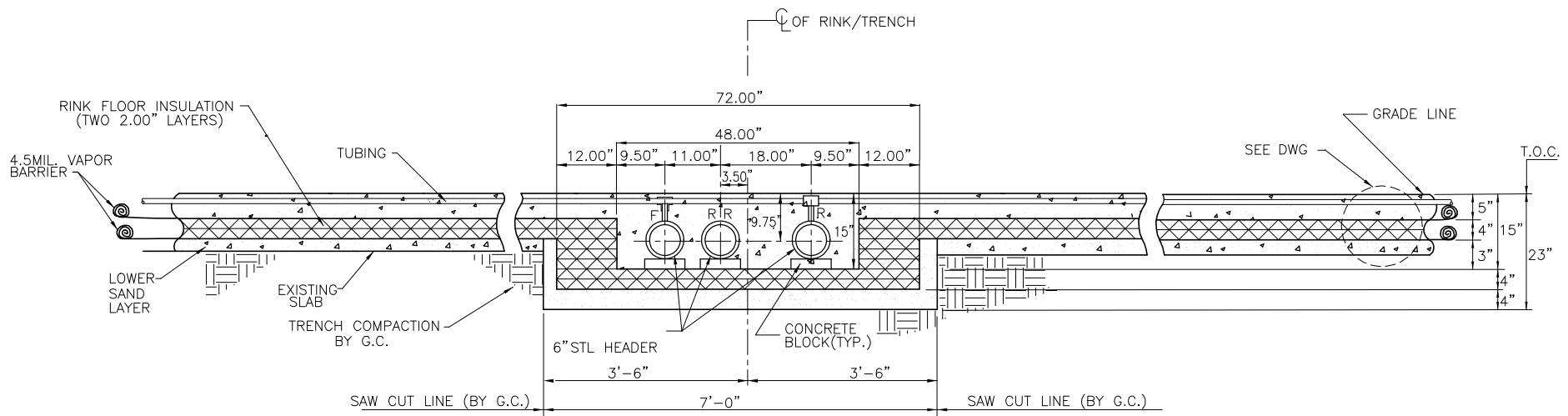
PERIMETER CURB/DASHER CROSS SECTION
RETROFIT CONCRETE RINK FLOOR
SLAB-ON-ASPHALT FLOOR W/4" INSULATION & SUBSOIL HEAT



www.everything-ice.com

(888)-543-0921

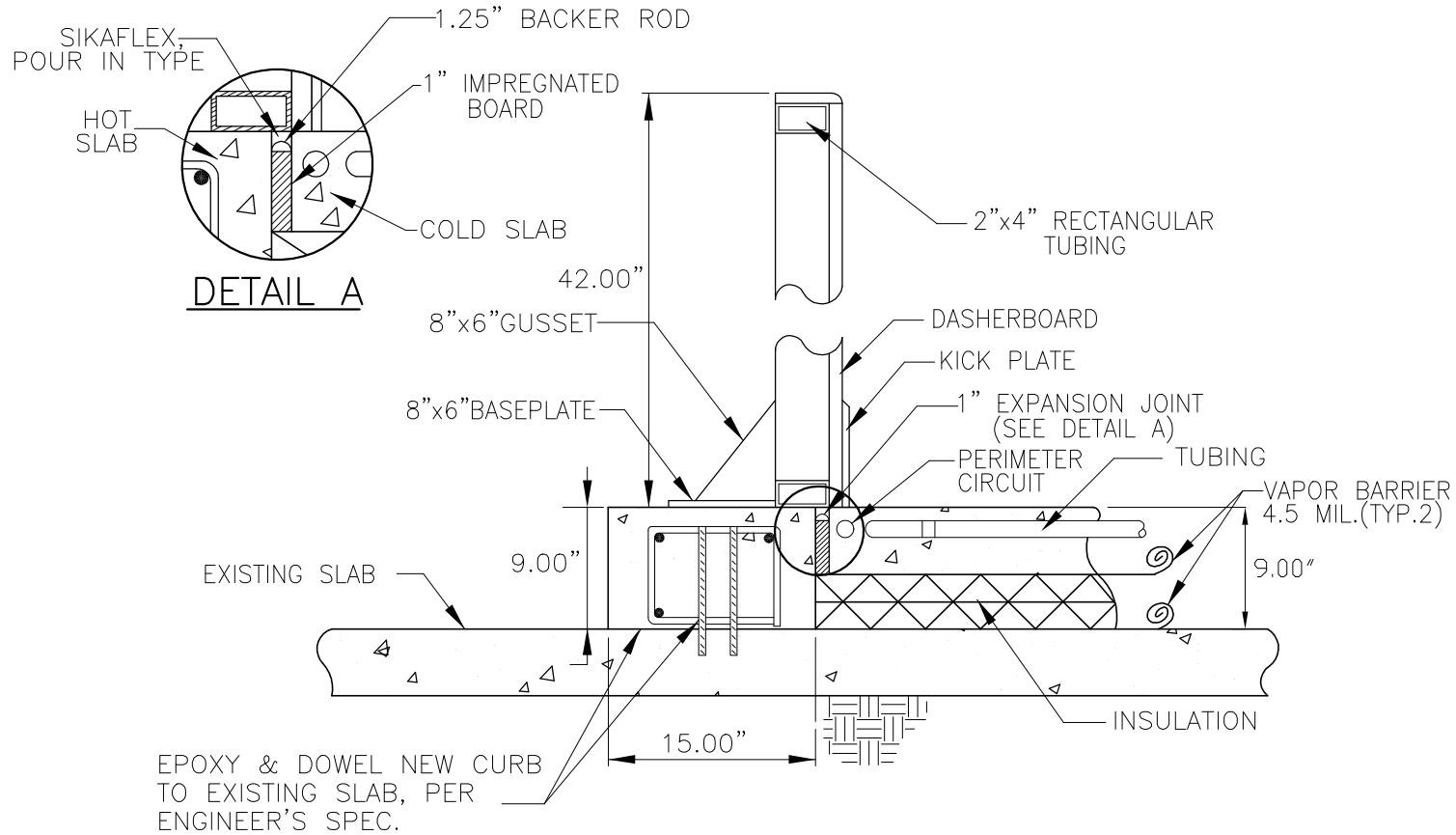
- NOTES:**
1. ALL ELEVATIONS MEASURED FROM LOWEST POINT IN TOP OF CURB(T.O.C.)
 2. EXCAVATION OF MAIN HEADER BY G.C.
 3. TRENCH ROUGH GRADE (BY G.C.) TO BE FINISHED TO +0/-1" TOLERANCE.
 4. TRENCH COMPACTION (BY G.C.) MINIMUM 98% BY MODIFIED PROCTOR.



HEADER TRENCH FLOOR CROSS SECTION
 RETROFIT CONCRETE RINK FLOOR
 SLAB-ON-SLAB W/4" INSULATION - SEASONAL RINK

NOTE:

- 1) ALL ELEV. MEASURED FROM LOWEST POINT IN TOP OF CURB (T.O.C.)
- 2) PERIMETER CONCRETE MIN. 4000psi @ 28 DAYS. ELEV. $\pm 1/8"$ / 10'-0"; $3/8"$ OVERALL.



PERIMETER CURB/DASHER CROSS SECTION
RETROFIT CONCRETE RINK FLOOR
SLAB ON SLAB FLOOR W/ 4" INSULATION - SEASONAL RINK

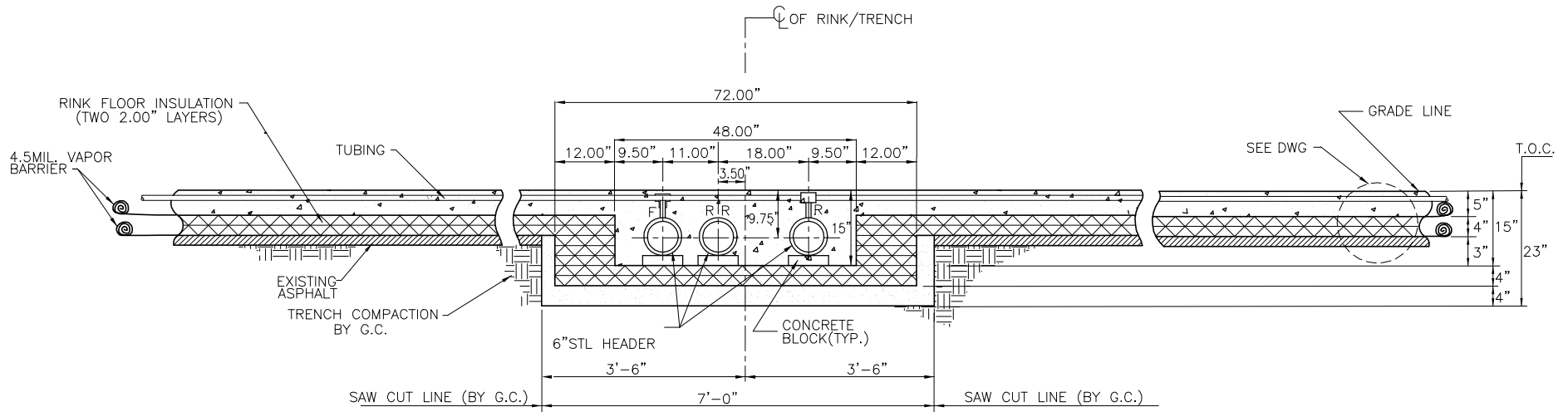
NOTES:

1. ALL ELEVATIONS MEASURED FROM LOWEST POINT IN TOP OF CURB(T.O.C.)
2. EXCAVATION OF MAIN HEADER BY G.C.
3. TRENCH ROUGH GRADE (BY G.C.) TO BE FINISHED TO +0/-1" TOLERANCE.
4. TRENCH COMPACTION (BY G.C.) MINIMUM 98% BY MODIFIED PROCTOR.



www.everything-ice.com

(888)-543-0921



HEADER TRENCH FLOOR CROSS SECTION
RETROFIT CONCRETE RINK FLOOR
SLAB-ON-ASPHALT W/4" INSULATION - SEASONAL RINK

NOTE:

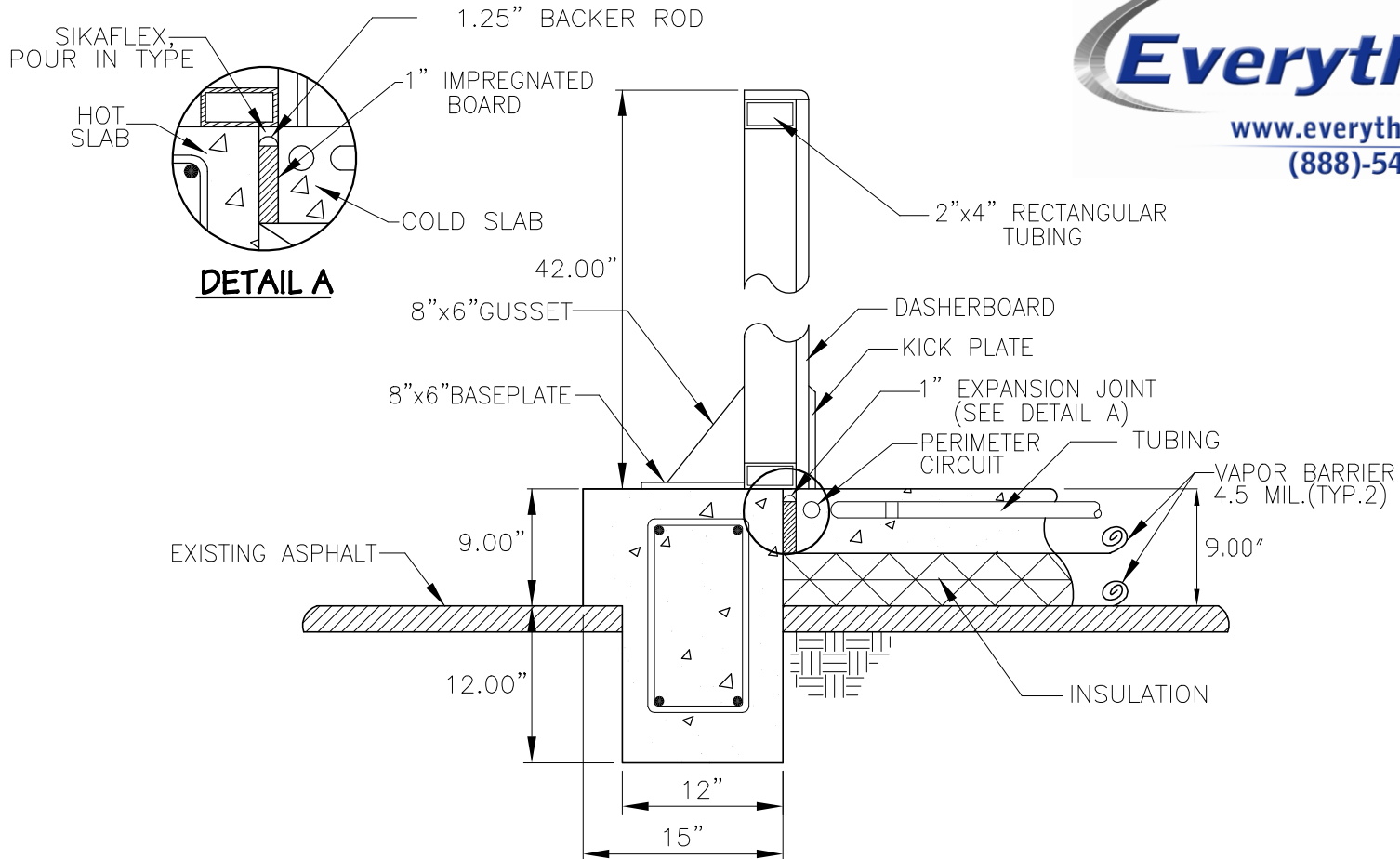
- 1) ALL ELEV. MEASURED FROM LOWEST POINT IN TOP OF CURB (T.O.C.)
- 2) PERIMETER CONCRETE MIN. 4000psi @ 28 DAYS. ELEV. ±1/8" / 10'-0"; 3/8" OVERALL.

* CURB DEPTH SHOWN FOR INDOOR APPLICATION ONLY. ENGINEER TO SPECIFY CURB DEPTH BELOW FROST LINE FOR OUTDOOR APPLICATIONS.



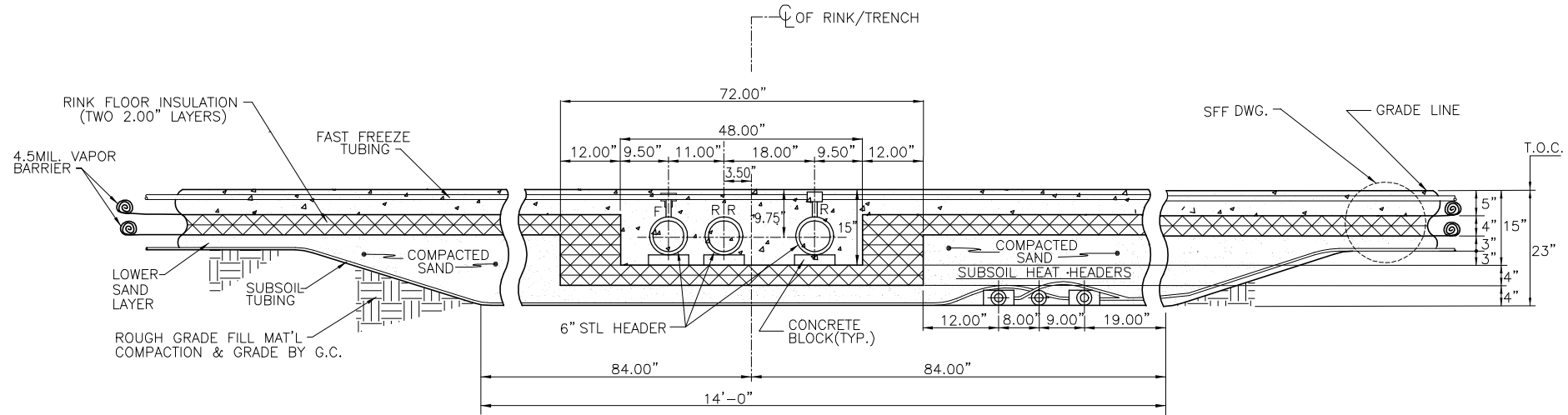
www.everything-ice.com

(888)-543-0921



PERIMETER CURB/DASHER CROSS SECTION
RETROFIT CONCRETE RINK FLOOR
SLAB ON ASPHALT FLOOR W/ 4" INSULATION - SEASONAL RINK

- NOTES:**
1. ALL ELEVATIONS MEASURED FROM LOWEST POINT IN TOP OF CURB(T.O.C.)
 2. EXCAVATION OF MAIN HEADER BY G.C.
 3. RINK ROUGH GRADE (BY G.C.) TO BE FINISHED TO +0/-1" TOLERANCE.
 4. ROUGH GRADE COMPACTION (BY G.C.) MINIMUM 98% BY MODIFIED PROCTOR.



HEADER TRENCH FLOOR CROSS SECTION
CONCRETE RINK FLOOR

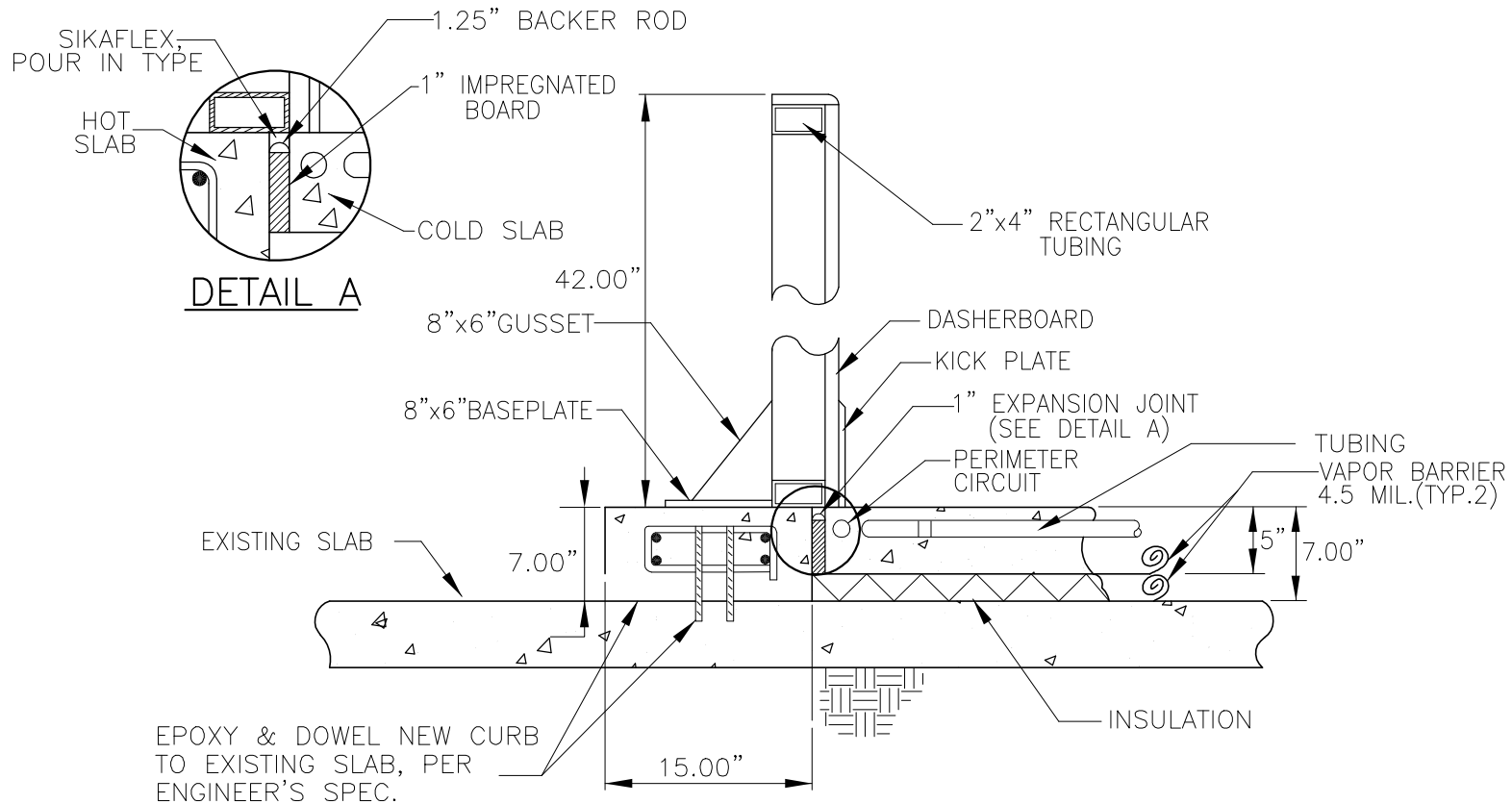
NOTE:

- 1) ALL ELEV. MEASURED FROM LOWEST POINT IN TOP OF CURB (T.O.C.)
- 2) PERIMETER CONCRETE MIN. 4000psi @ 28 DAYS. ELEV. $\pm 1/8"$ /10'-0"; $3/8"$ OVERALL.



www.everything-ice.com

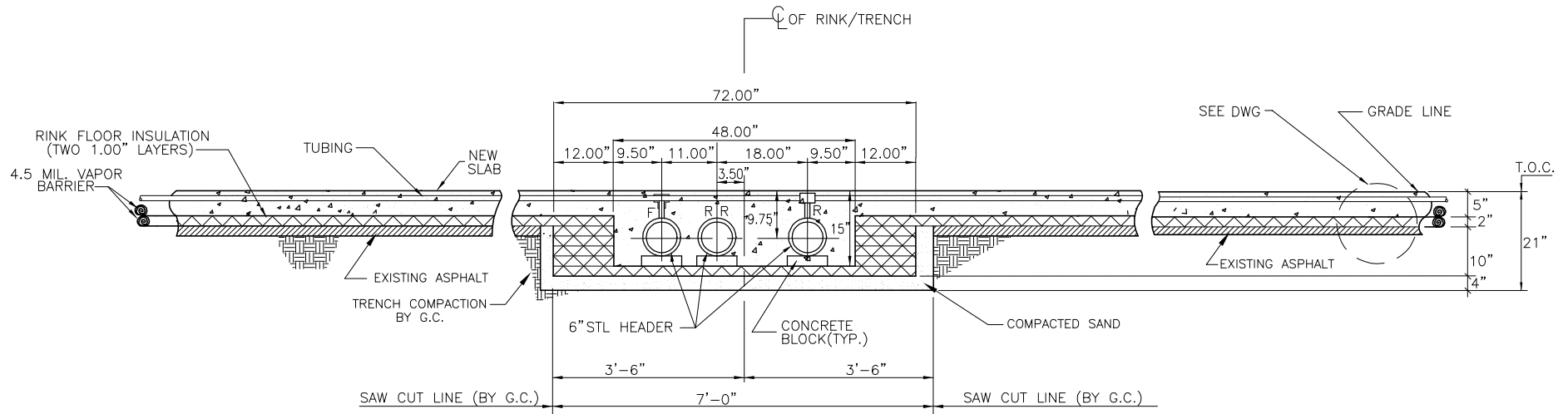
(888)-543-0921



PERIMETER CURB/DASHER CROSS SECTION
RETROFIT CONCRETE RINK FLOOR
SLAB ON SLAB FLOOR W/ 2" INSULATION - SEASONAL RINK

NOTES:

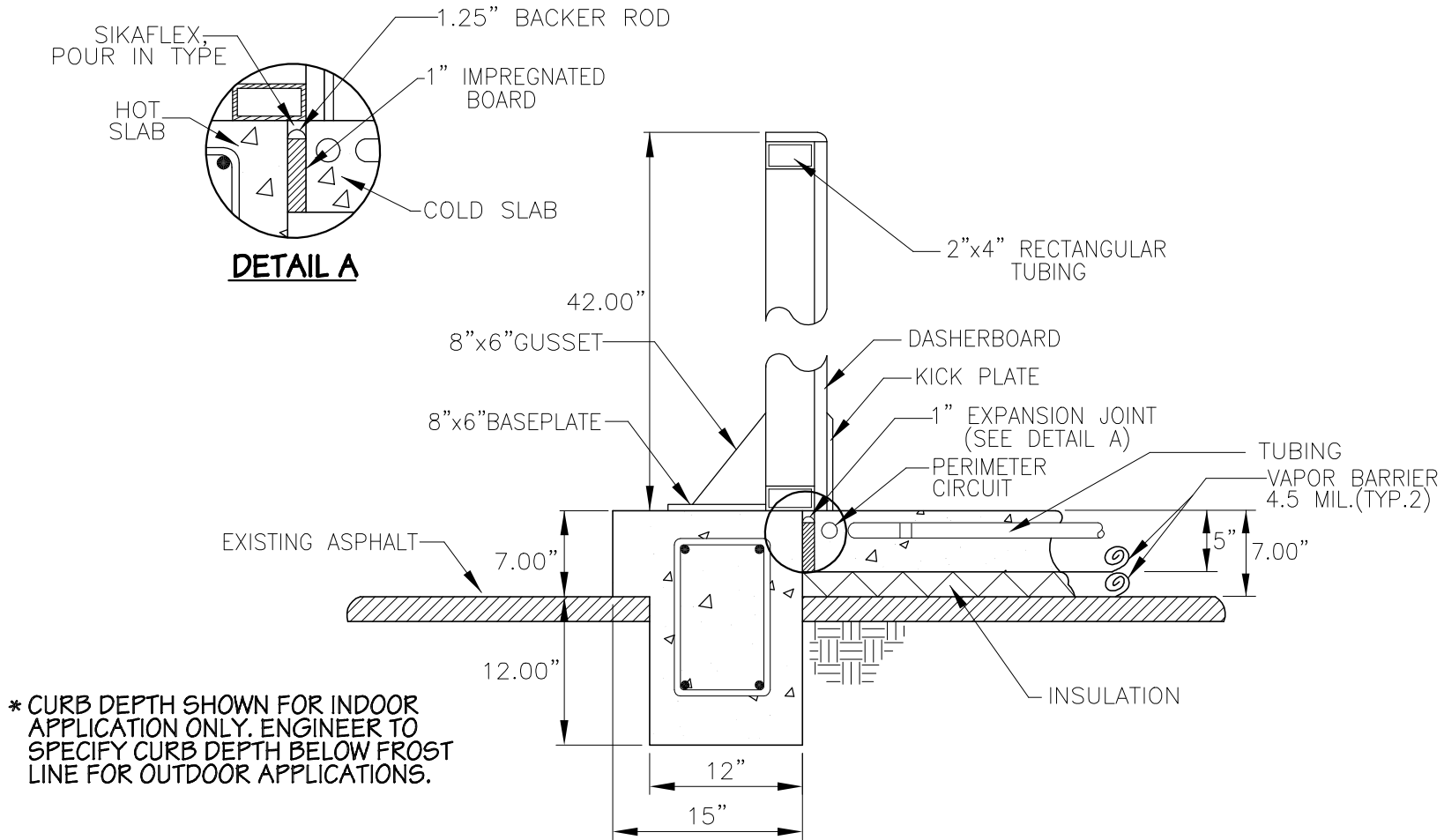
1. ALL ELEVATIONS MEASURED FROM LOWEST POINT IN TOP OF CURB(T.O.C.)
2. EXCAVATION OF MAIN HEADER BY G.C.
3. TRENCH ROUGH GRADE (BY G.C.) TO BE FINISHED TO +0/-1" TOLERANCE.
4. TRENCH COMPACTION (BY G.C.) MINIMUM 98% BY MODIFIED PROCTOR.



HEADER TRENCH FLOOR CROSS SECTION
RETROFIT CONCRETE RINK FLOOR
SLAB-ON-ASPHALT W/2" INSULATION - SEASONAL RINK

NOTE:

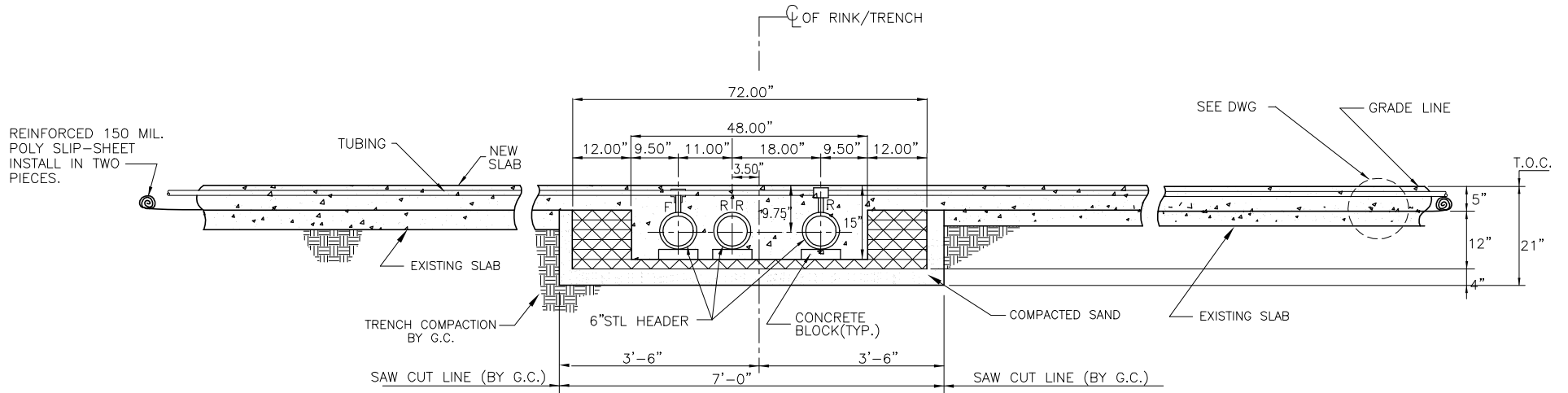
- 1) ALL ELEV. MEASURED FROM LOWEST POINT IN TOP OF CURB (T.O.C.)
- 2) PERIMETER CONCRETE MIN. 4000psi @ 28 DAYS. ELEV. $\pm 1/8"$ / 10'-0"; $3/8"$ OVERALL.



PERIMETER CURB/DASHER CROSS SECTION
RETROFIT CONCRETE RINK FLOOR
SLAB ON ASPHALT FLOOR W/ 2" INSULATION - SEASONAL RINK

NOTES:

1. ALL ELEVATIONS MEASURED FROM LOWEST POINT IN TOP OF CURB(T.O.C)
2. EXCAVATION OF MAIN HEADER BY G.C.
3. TRENCH ROUGH GRADE (BY G.C.) TO BE FINISHED TO $\pm 0/-1$ " TOLERANCE.
4. TRENCH COMPACTION (BY G.C.) MINIMUM 98% BY MODIFIED PROCTOR.



HEADER TRENCH FLOOR CROSS SECTION
 RETROFIT CONCRETE FLOOR
 SLAB-ON-SLAB W/SLIP SHEET - SEASONAL RINK

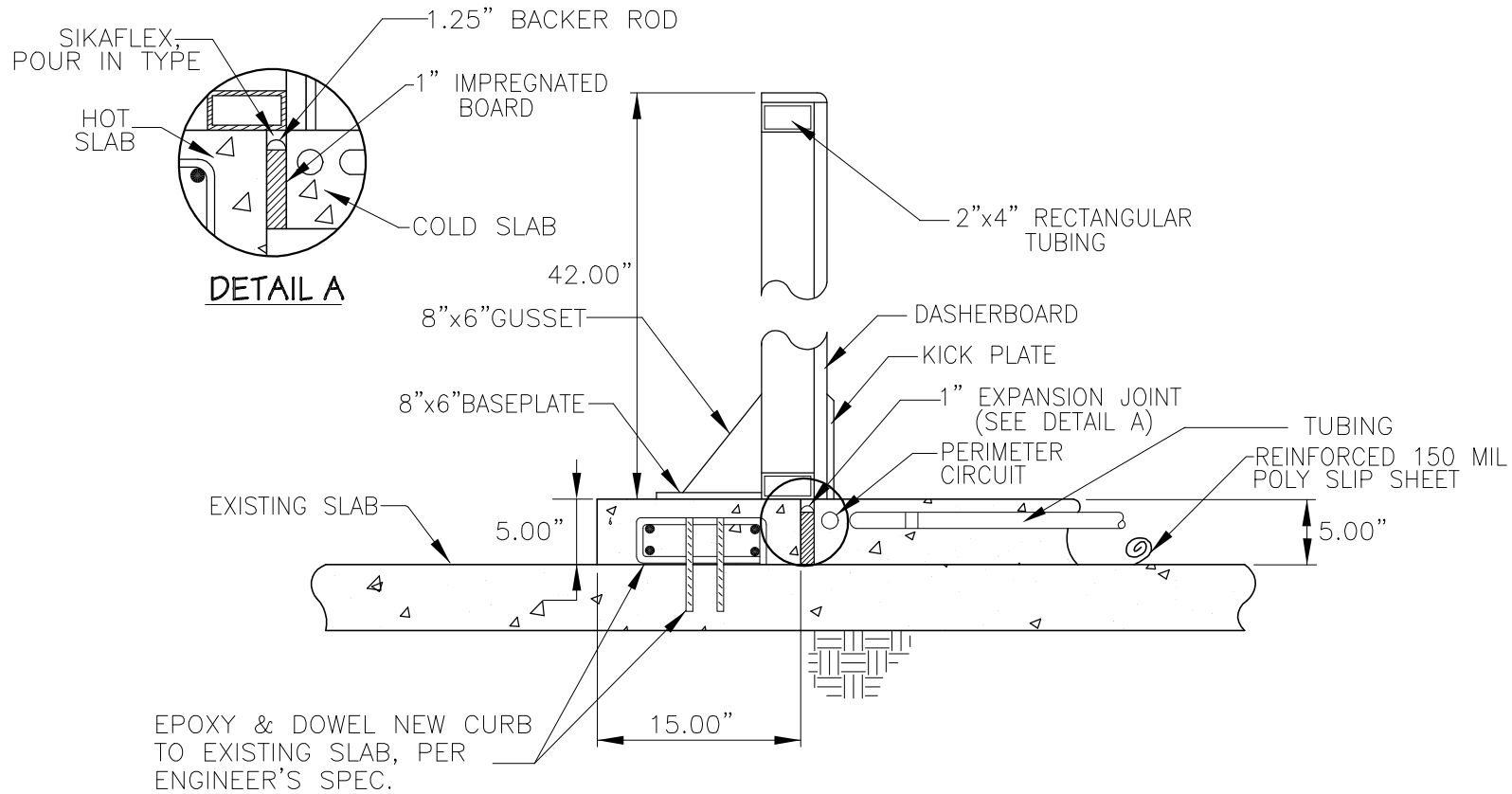
NOTE:

- 1) ALL ELEV. MEASURED FROM LOWEST POINT IN TOP OF CURB (T.O.C.)
- 2) PERIMETER CONCRETE MIN. 4000psi @ 28 DAYS. ELEV. ±1/8" /10'-0"; 3/8" OVERALL.



www.everything-ice.com

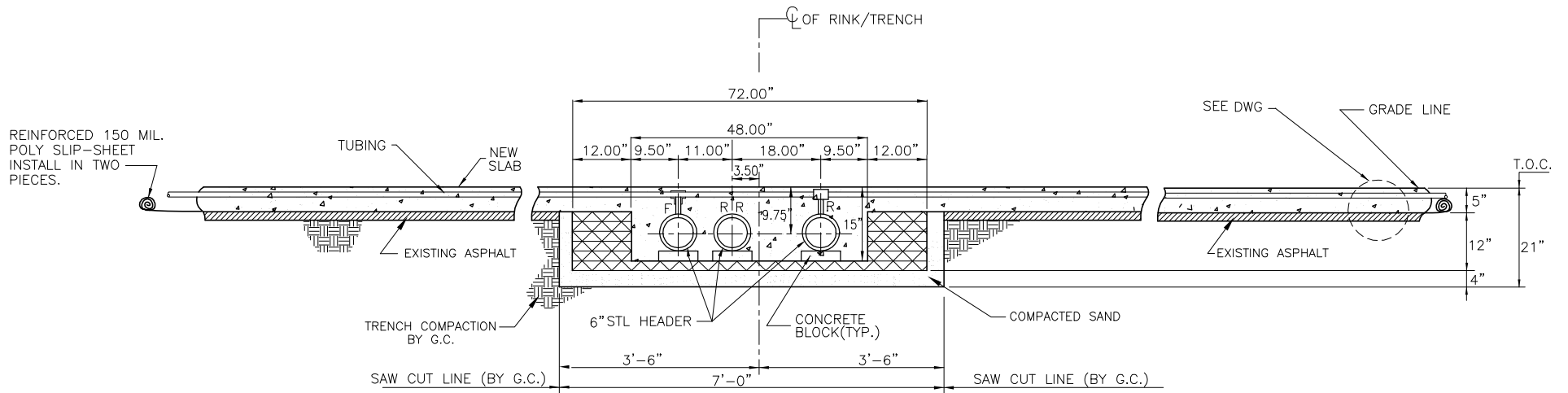
(888)-543-0921



PERIMETER CURB/DASHER CROSS SECTION
RETROFIT CONCRETE FLOOR
SLAB ON SLAB FLOOR W/ SLIP SHEET - SEASONAL RINK

NOTES:

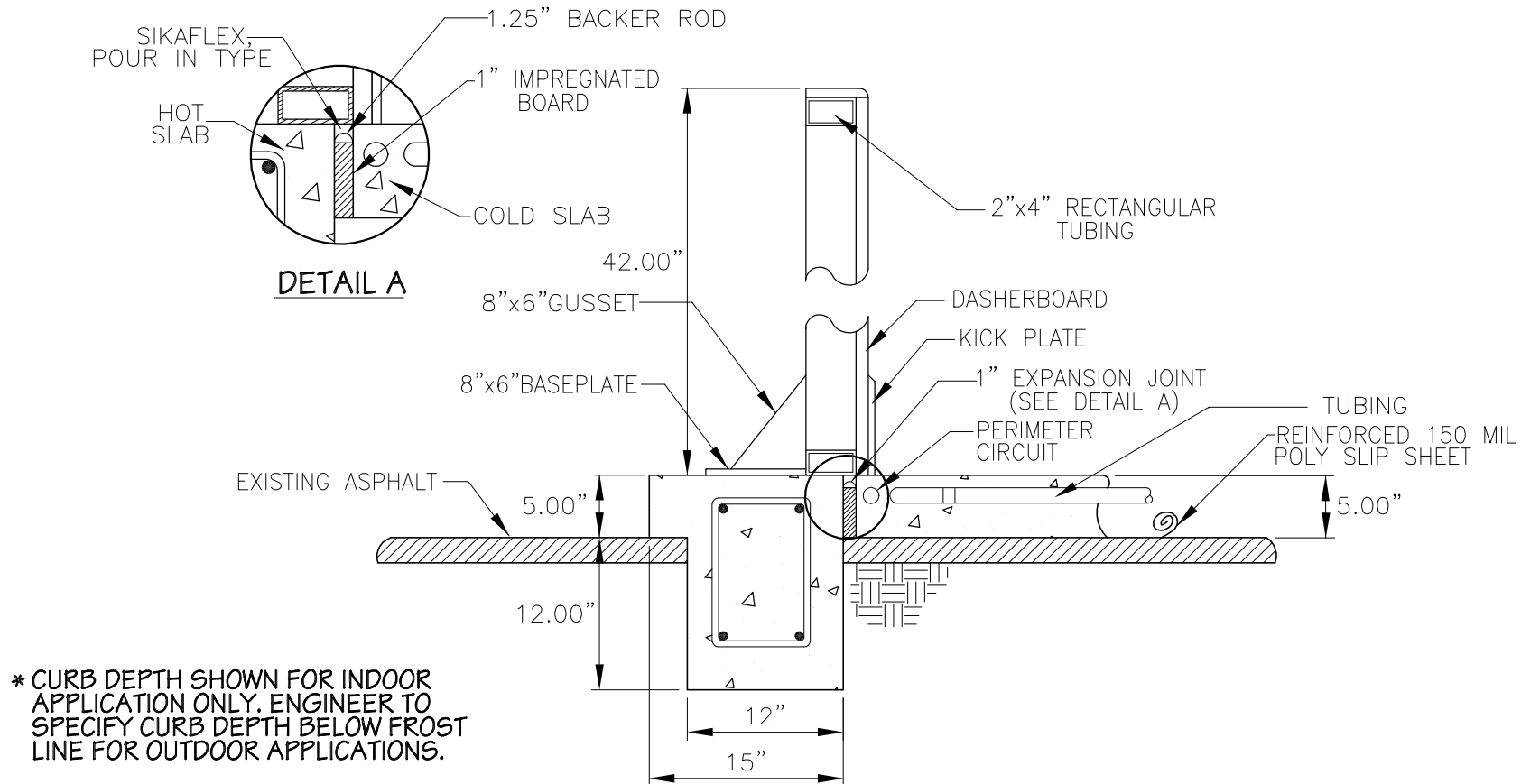
1. ALL ELEVATIONS MEASURED FROM LOWEST POINT IN TOP OF CURB(T.O.C)
2. EXCAVATION OF MAIN HEADER BY G.C.
3. TRENCH ROUGH GRADE (BY G.C.) TO BE FINISHED TO +0/-1" TOLERANCE.
4. TRENCH COMPACTION (BY G.C.) MINIMUM 98% BY MODIFIED PROCTOR.



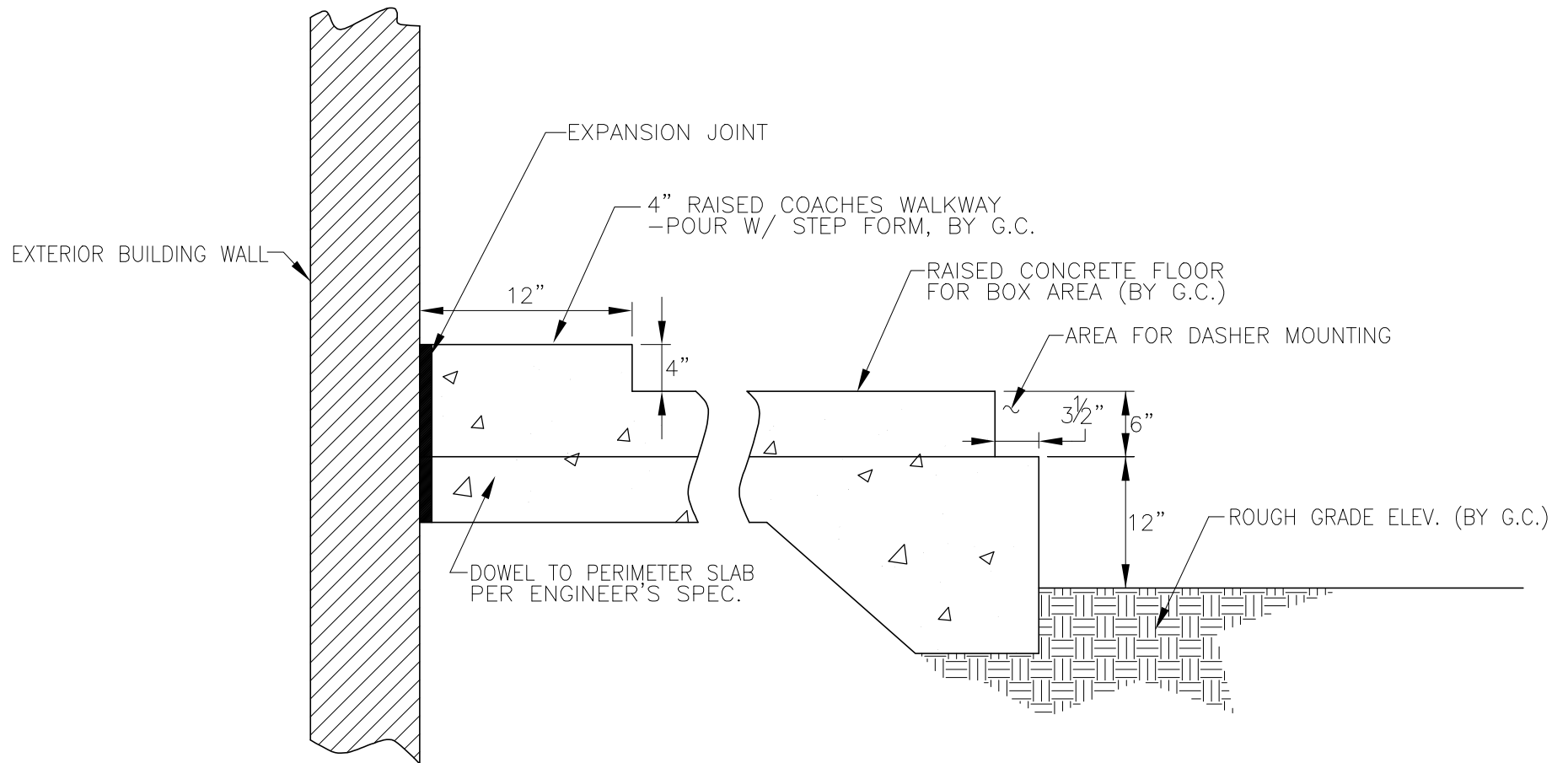
HEADER TRENCH FLOOR CROSS SECTION
 RETROFIT CONCRETE FLOOR
 SLAB-ON-ASPHALT W/SLIP SHEET - SEASONAL RINK

NOTE:

- 1) ALL ELEV. MEASURED FROM LOWEST POINT IN TOP OF CURB (T.O.C.)
- 2) PERIMETER CONCRETE MIN. 4000psi @ 28 DAYS. ELEV. ±1/8" /10'-0"; 3/8" OVERALL.



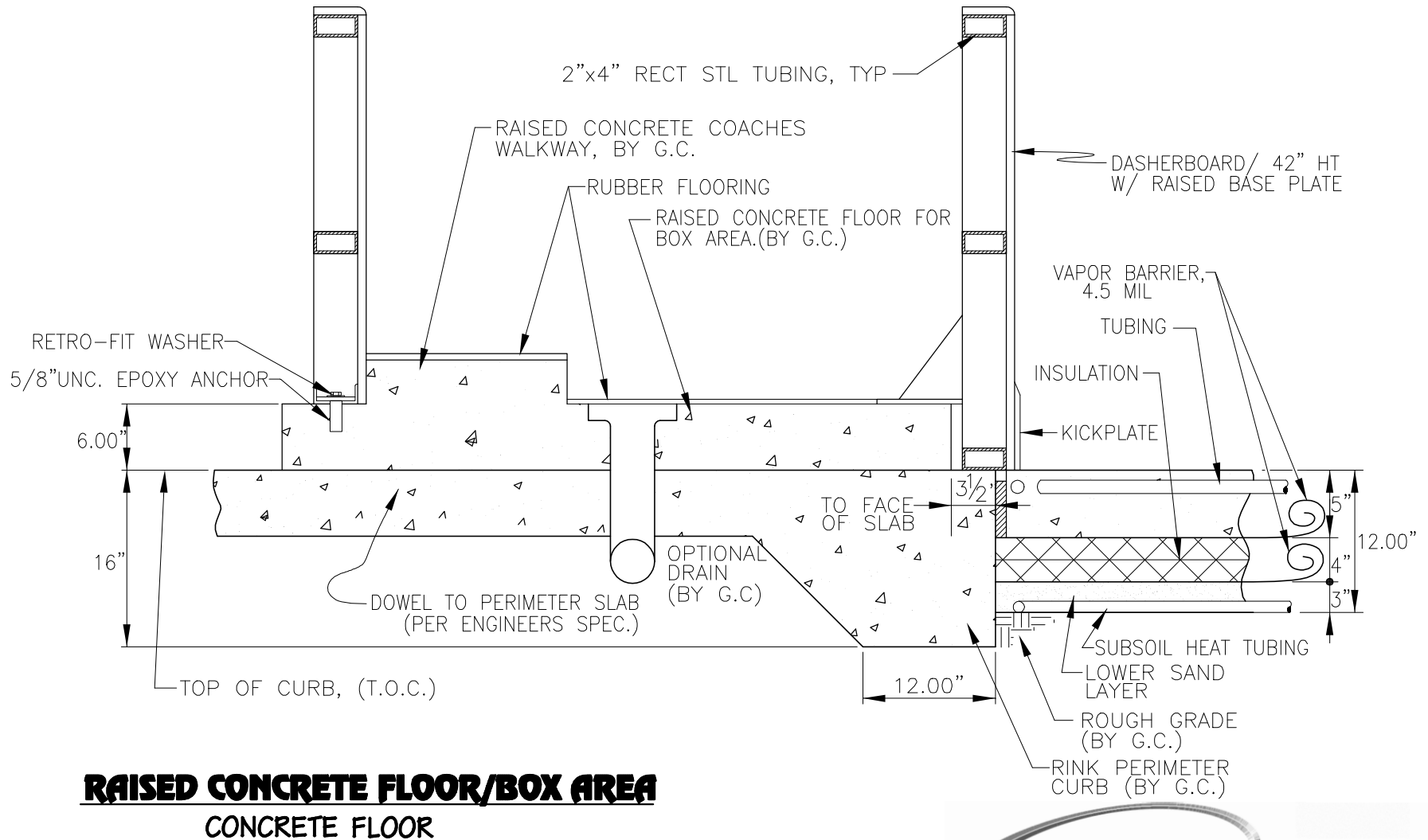
PERIMETER CURB/DASHER CROSS SECTION
RETROFIT CONCRETE FLOOR
SLAB ON ASPHALT FLOOR W/ SLIP SHEET - SEASONAL RINK

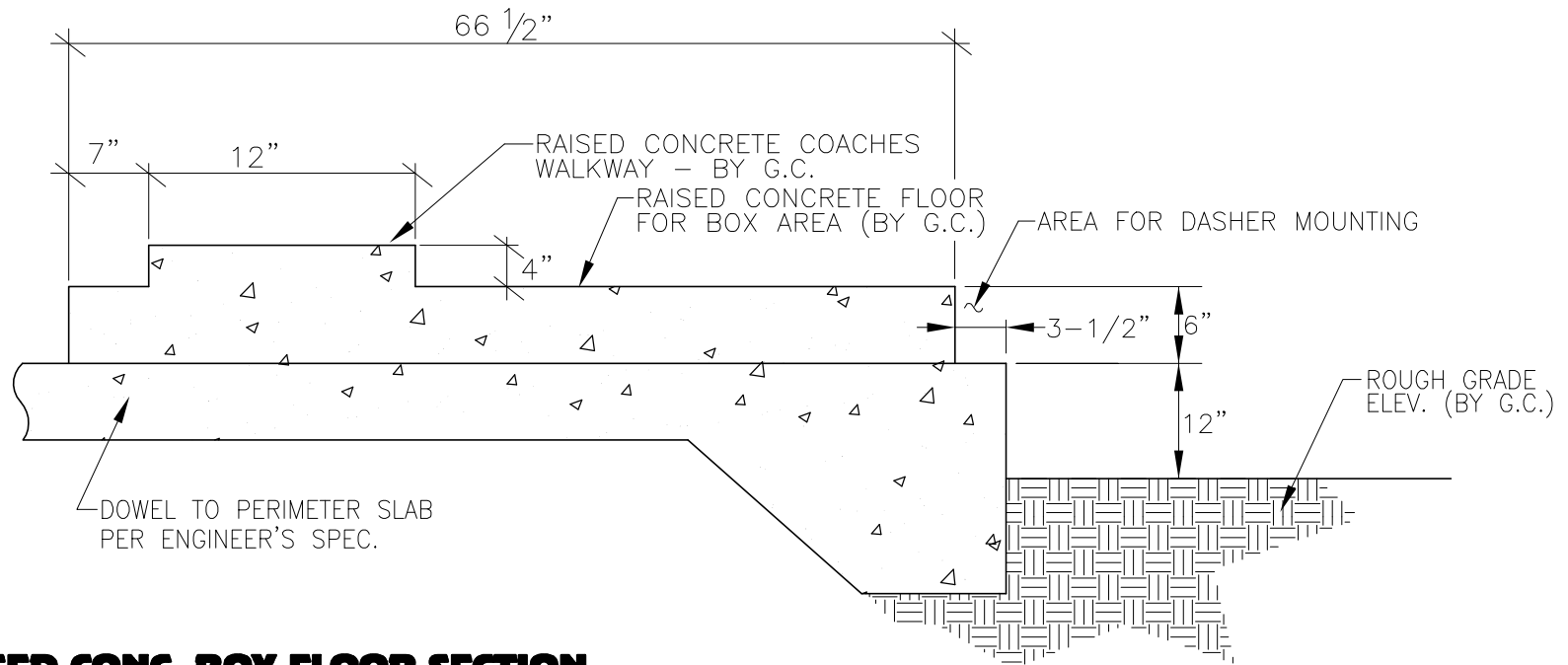


RAISED CONC. BOX FLOOR SECTION
 CONCRETE RINK FLOOR

NOTES:

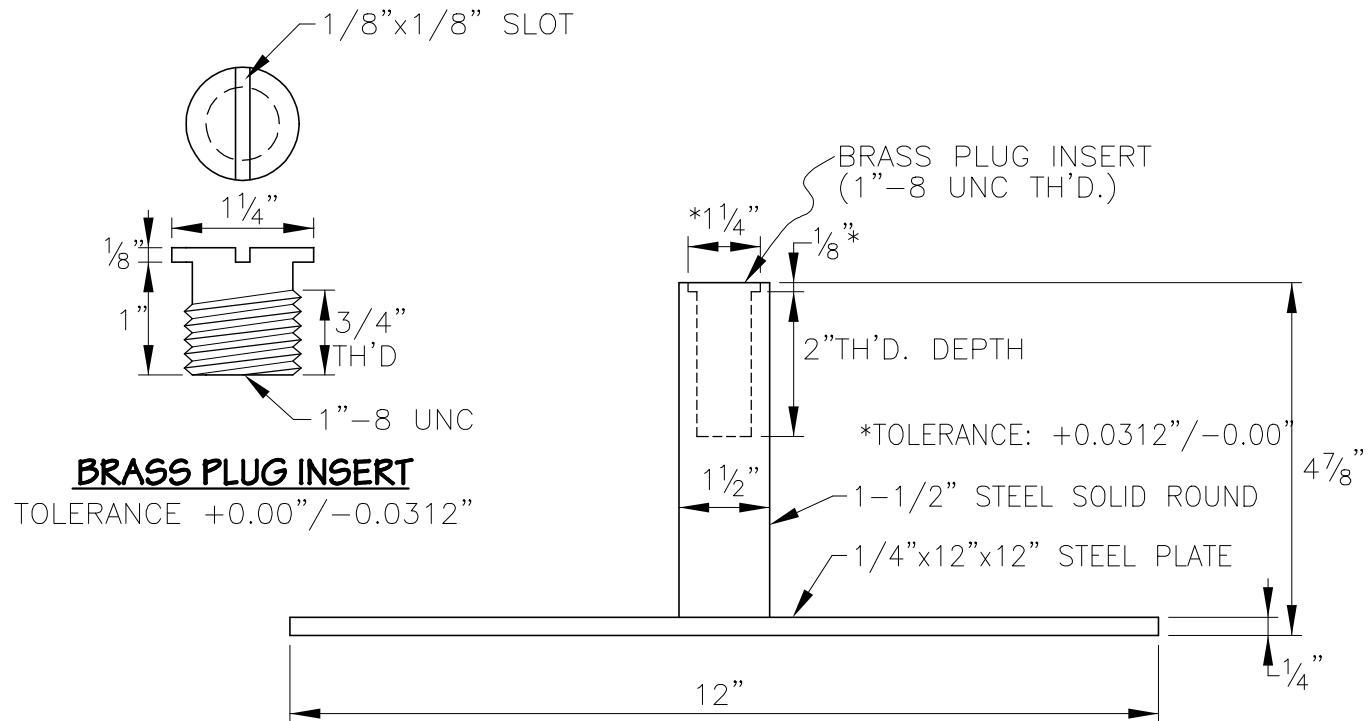
1. ALL ELEV. MEASURED FROM LOWEST POINT IN TOP OF CURB(T.O.C.)
2. PERIMETER CONCRETE MIN. 4000 psi @ 28 DAYS ELEV.
±1/8"/10'-0"; 3/8" OVERALL.



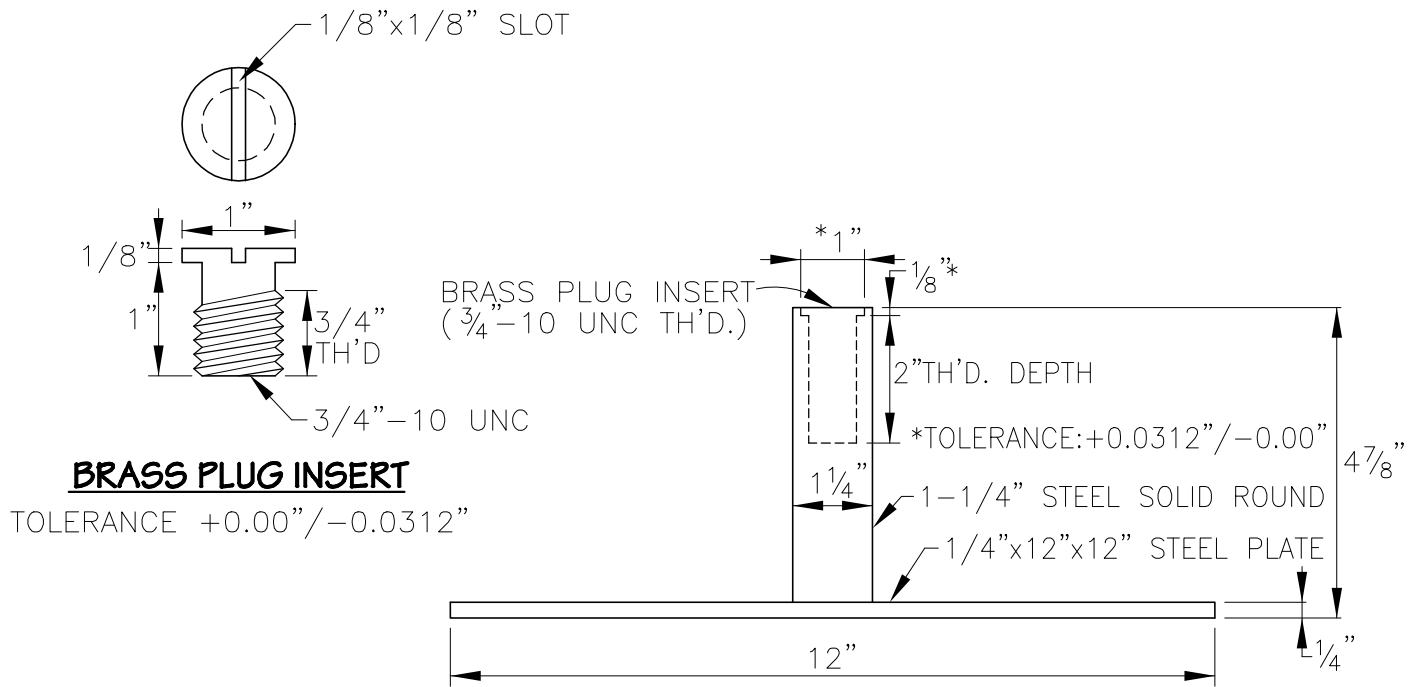


RAISED CONC. BOX FLOOR SECTION

FOR BOXES W/BACK WALLS
CONCRETE BASE RINK FLOOR



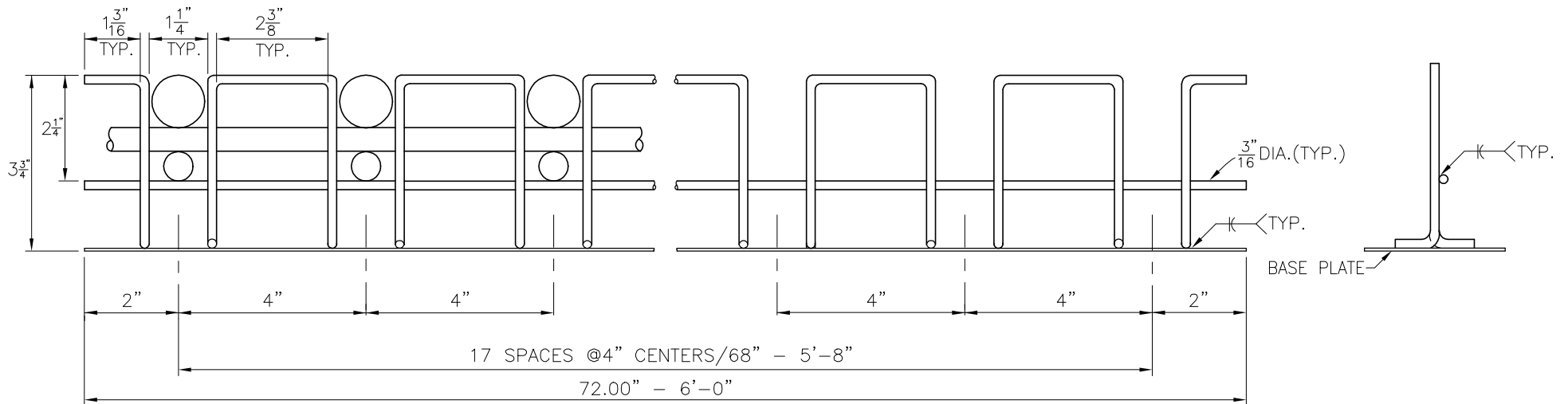
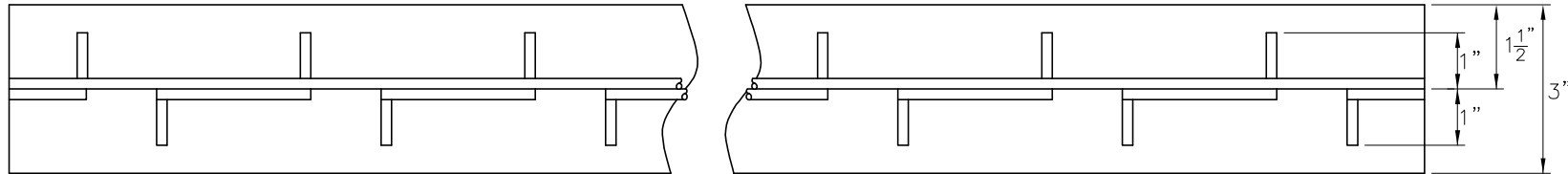
CONCRETE FLOOR ANCHOR-1" UNC



CONCRETE FLOOR ANCHOR-3/4" UNC

NOTES:

- 1. MAT'L A) 3/16" DIA. STEEL ROD H.R.
B) 24 GA. STEEL SHEET
- 2. FINISHED PART SHALL BE CLEAN AND FREE OF ALL SLAG WELD, SPLATTER, AND SHARP EDGES.

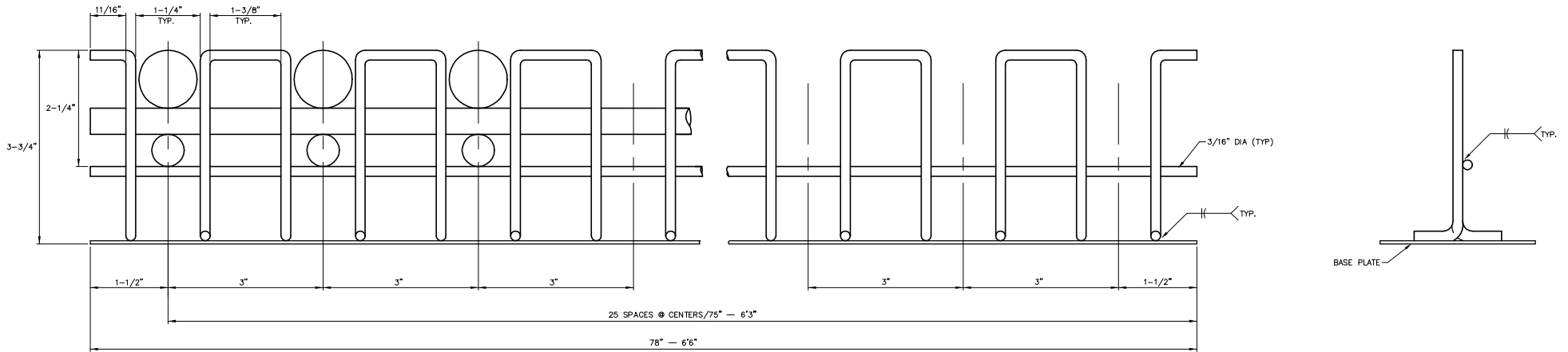
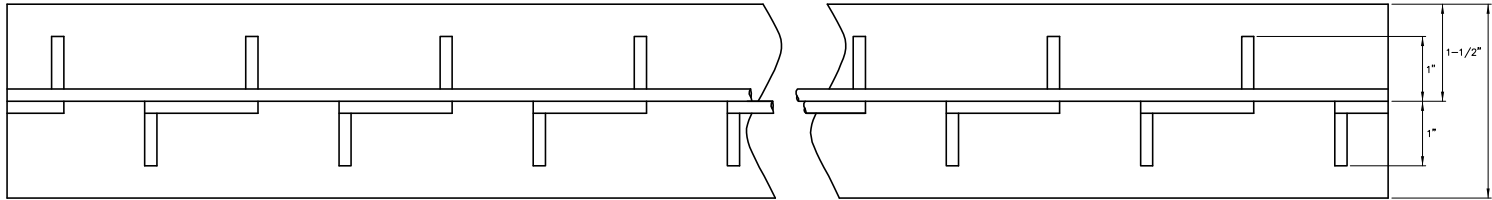


RINK PIPE CHAIR, 4" O.C.
5" CONCRETE RINK FLOOR

Everything IceTM
www.everything-ice.com
(888)-543-0921

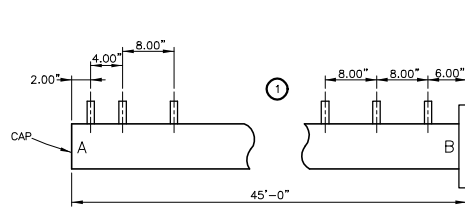
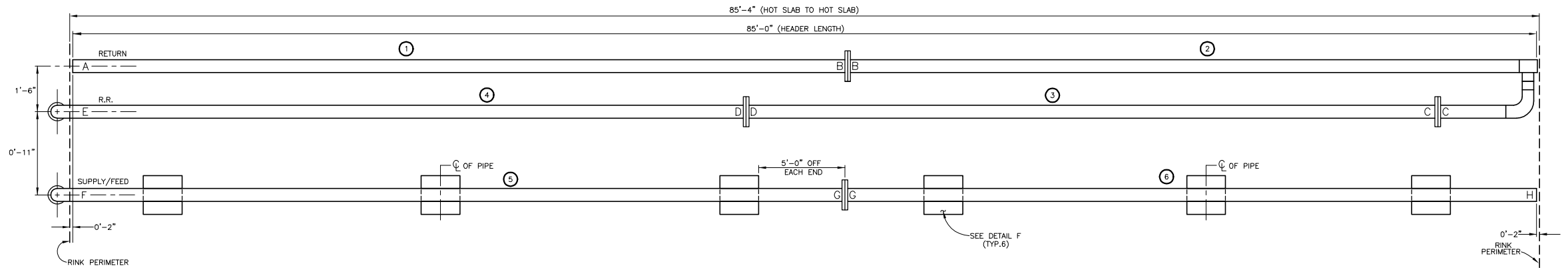
NOTES:

1. MAT'L A) 3/16" DIA. STEEL ROD H.R.
B) 24 GA. STEEL SHEET
2. FINISHED PART SHALL BE CLEAN AND FREE OF ALL SLAG WELD, SPLATTER, AND SHARP EDGES.

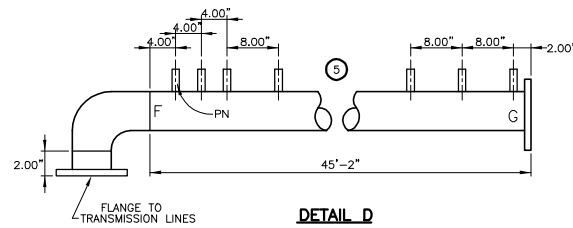


RINK PIPE CHAIR, 3" O.C.
5" CONCRETE RINK FLOOR



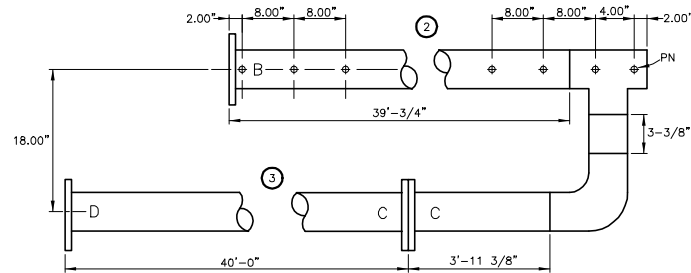


DETAIL A

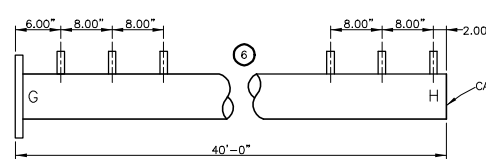


DETAIL D

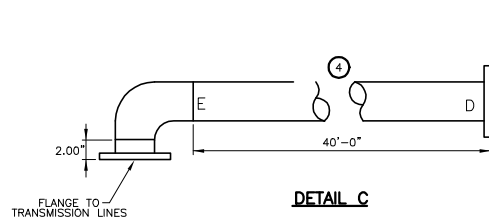
PIPE NO.	LENGTH	TOTAL NIPPLES	END	COND.	DISTANCE TO FIRST NIPPLE	END	COND.	DISTANCE TO FIRST NIPPLE	REMARKS
1	45'-0"	68	A	CAP	2.00"	B	FLANGE	6.00"	SEE DETAIL A
2	39'-3/4"	60+1	B	FLANGE	2.00"	C	FLANGE (PN)	2.00"	SEE DETAIL B
3	40'-0"	-	C	FLANGE	-	D	FLANGE	-	SEE DETAIL B
4	40'-0"	-	D	FLANGE	-	E	ELBOW	-	SEE DETAIL C
5	45'-2"	68+1	F	ELBOW	4.00" (PN)	G	FLANGE	2.00"	SEE DETAIL D
6	40'-0"	60	G	FLANGE	6.00"	H	CAP	2.00"	SEE DETAIL E



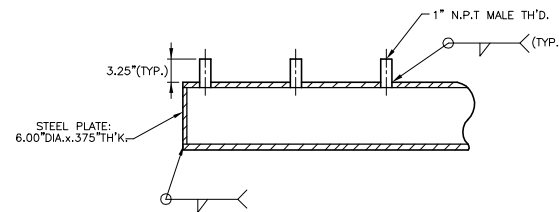
DETAIL B



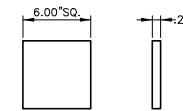
DETAIL E



DETAIL C



CAP SECTION



DETAIL F
MAT'L: .25" STL PLATE

NOTES:

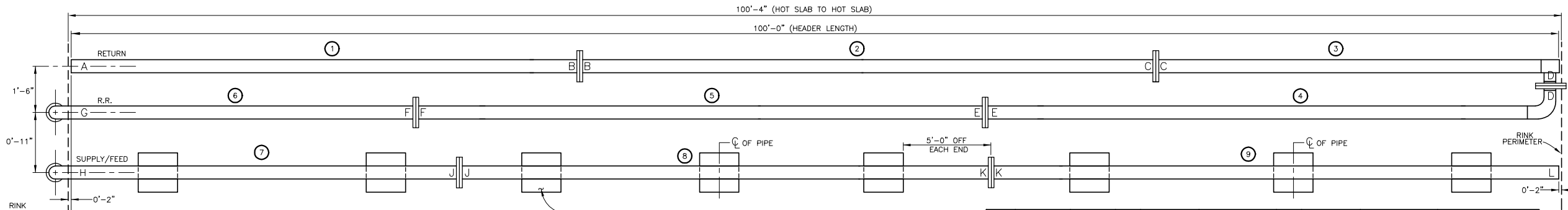
1. MAT'L:
 - A) 6.00" SCH. 40 STEEL PIPE.
 - B) 1.00" SCH. 80 STEEL PIPE.
 - C) ALL FLANGES TO BE SLIP ON TYPE.
 - D) 6" SCH. 40 WELD 90° ELLS LONG RADIUS
- 2) NO LEAKAGE ALLOWED.
- 3) MARK END OF EACH PIPE WITH LETTERS SHOWN ON CHART.
- 4) FINISH PIPE STRAIGHTNESS .062" IN ANY 5' AND SHALL NOT EXCEED .50" IN ANY 40'-0".
- 5) COMPLETED PIPE SECTION TO BE COATED W/ RUST PROTECTIVE PRIMER.
- 6) DO NOT PAINT THE FACE OF ANY FLANGE.
- 7) END CAPS TO BE INSTALLED AFTER HEADER PIPE COMPLETION.



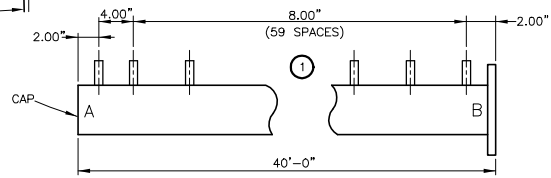
www.everything-ice.com

(888)-543-0921

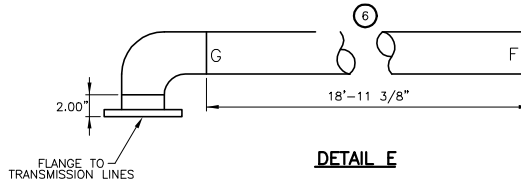
CONCRETE RINK FLOOR
SCH 40 6" STL PIPE / 85'-0"



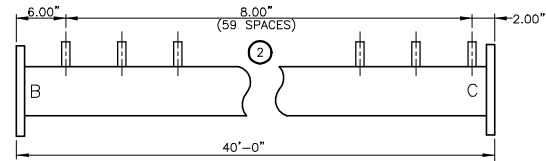
PIPE NO.	LENGTH	TOTAL NIPPLES	END	COND.	DISTANCE TO FIRST NIPPLE	END	COND.	DISTANCE TO FIRST NIPPLE	REMARKS
1	40'-0"	61	A	CAP	2.00"	B	FLANGE	2.00"	SEE DETAIL A
2	40'-0"	60	B	FLANGE	6.00"	C	FLANGE	2.00"	SEE DETAIL B
3	19'-3/4"	30+1	C	FLANGE	6.00"	D	TEE	2.00"(PN)	SEE DETAIL C
4	40'-0"	-	D	ELBOW	-	E	FLANGE	-	SEE DETAIL C
5	40'-0"	-	E	FLANGE	-	F	FLANGE	-	SEE DETAIL D
6	18'-11 3/8"	-	F	FLANGE	-	G	ELBOW	-	SEE DETAIL E
7	20'-2"	30+1	H	ELBOW	4.00"(PN)	J	FLANGE	6.00"	SEE DETAIL F
8	40'-0"	60	J	FLANGE	2.00"	K	FLANGE	6.00"	SEE DETAIL G
9	40'-0"	61	K	FLANGE	2.00"	L	CAP	2.00"	SEE DETAIL H



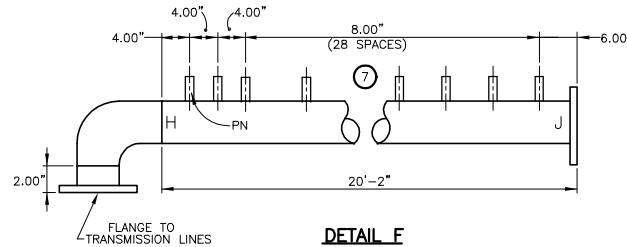
DETAIL A



DETAIL E



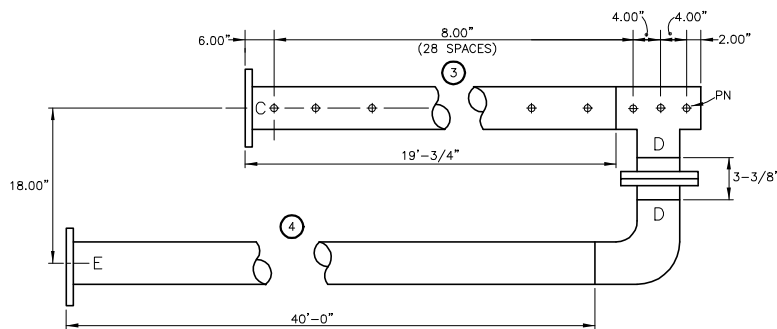
DETAIL B



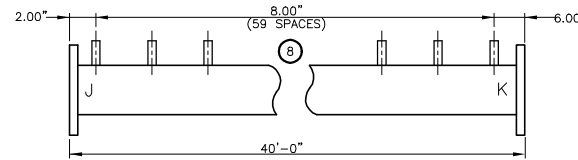
DETAIL F

NOTES:

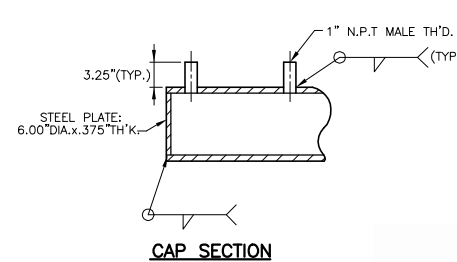
- MAT'L:
 - 6.00" SCH. 40 STEEL PIPE.
 - 1.00" SCH. 80 STEEL PIPE.
 - ALL FLANGES TO BE SLIP ON TYPE.
 - 6" SCH. 40 WELD 90° ELLS LONG RADIUS
- NO LEAKAGE ALLOWED.
- MARK END OF EACH PIPE WITH LETTERS SHOWN ON CHART.
- FINISH PIPE STRAIGHTNESS .062" IN ANY 5' AND SHALL NOT EXCEED .50" IN ANY 40'-0".
- COMPLETED PIPE SECTION TO BE COATED W/ RUST PROTECTIVE PRIMER.
- DO NOT PAINT THE FACE OF ANY FLANGE.
- END CAPS TO BE INSTALLED AFTER HEADER PIPE COMPLETION.



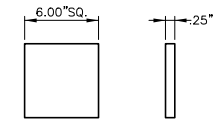
DETAIL C



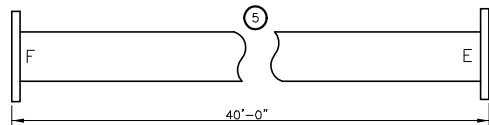
DETAIL G



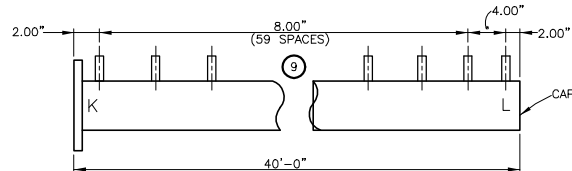
CAP SECTION



DETAIL J
MAT'L: .25" STL PLATE

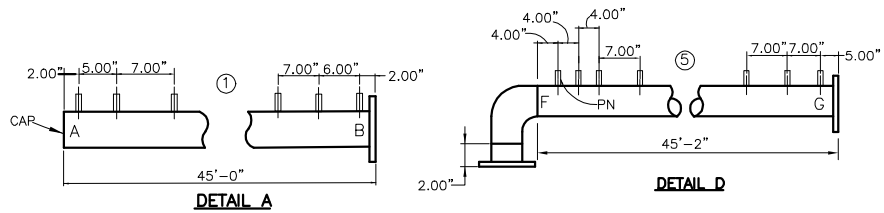
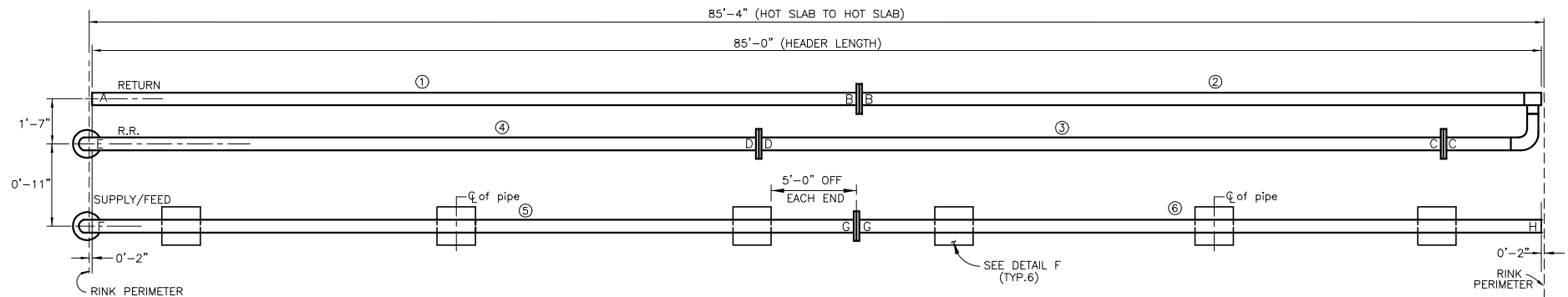


DETAIL D

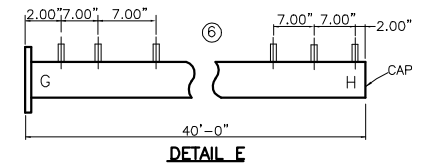
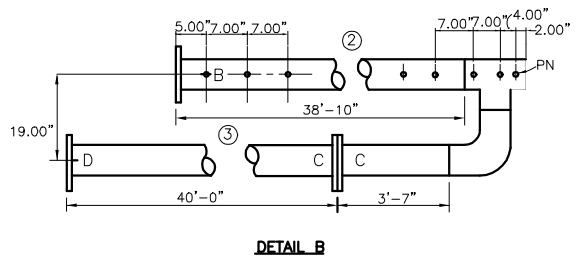


DETAIL H

HEADER SYSTEM
CONCRETE RINK FLOOR
SCH 40 6" STL PIPE/ 100'-0"

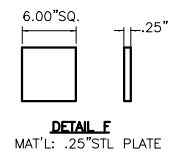
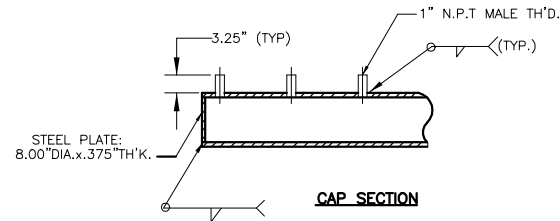
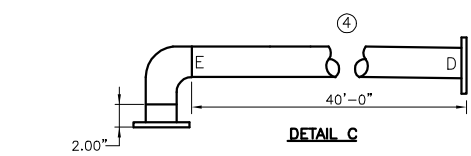


PIPE NO.	LENGTH	TOTAL NIPPLES	END	COND.	DISTANCE TO FIRST NIPPLE	END	COND.	DISTANCE TO FIRST NIPPLE	REMARKS
1	45'-0"	78	A	CAP	2.00"	B	FLANGE	2.00"	SEE DETAIL A
2	38'-10"	68+1	B	FLANGE	5.00"	C	FLANGE	2.00"(PN)	SEE DETAIL B
3	40'-0"	-	C	FLANGE	-	D	FLANGE	-	SEE DETAIL B
4	40'-0"	-	D	FLANGE	-	E	ELBOW	-	SEE DETAIL C
5	45'-2"	77+1	F	ELBOW	4.00"(PN)	G	FLANGE	5.00"	SEE DETAIL D
6	40'-0"	69	G	FLANGE	2.00"	H	CAP	2.00"	SEE DETAIL E



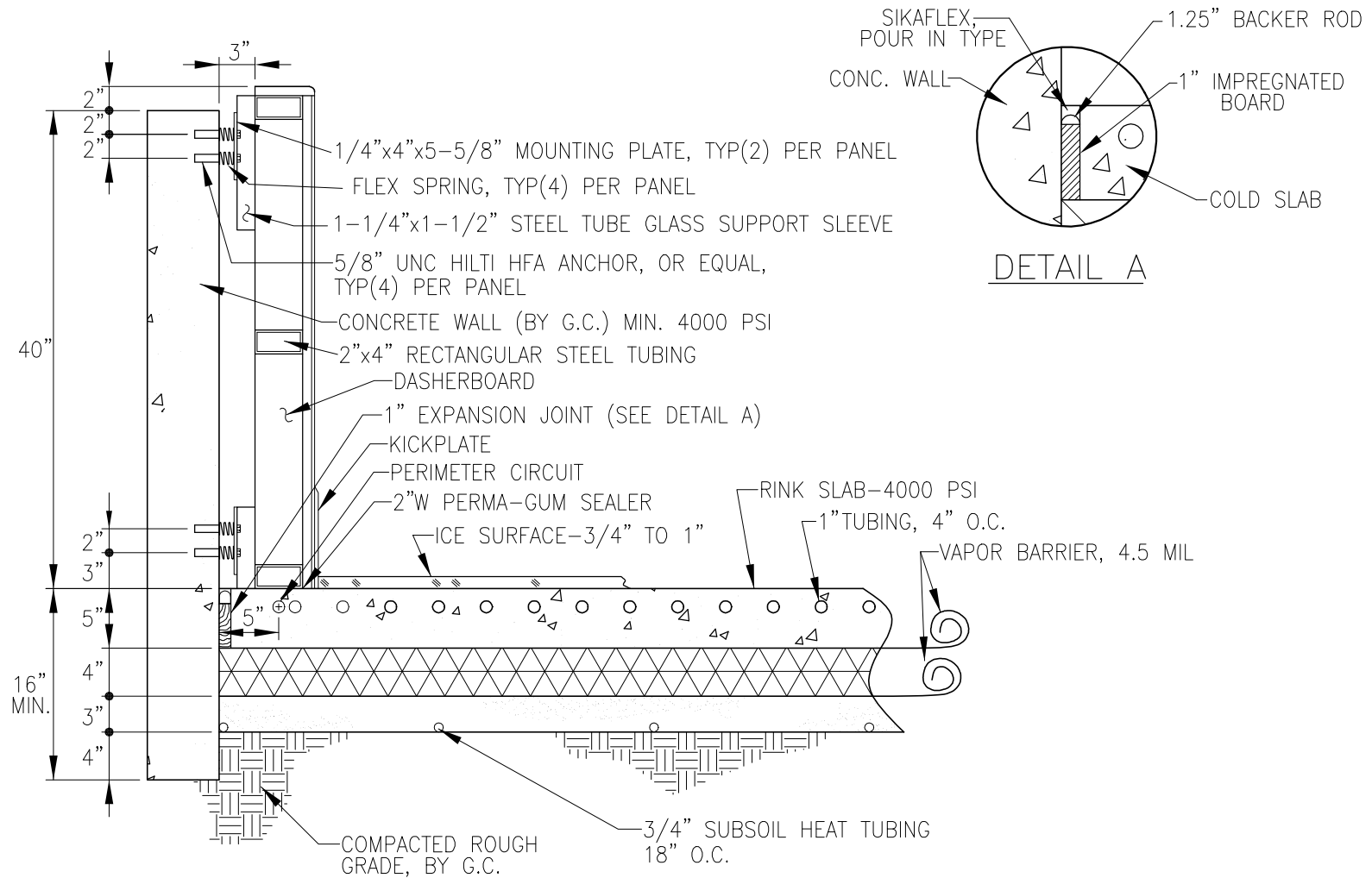
NOTES:

- MAT'L:
 A) 8.00" SCH. 40 STEEL PIPE.
 B) 1.00" SCH. 80 STEEL PIPE.
 C) ALL FLANGES TO BE SLIP ON TYPE.
 D) 8" SCH. 40 WELD 90° ELLS LONG RADIUS
- NO LEAKAGE ALLOWED.
- MARK END OF EACH PIPE WITH LETTERS SHOWN ON CHART.
- FINISH PIPE STRAIGHTNESS .062" IN ANY 5' AND SHALL NOT EXCEED .50" IN ANY 40'-0".
- COMPLETED PIPE SECTION TO BE COATED W/RUST PROTECTIVE PRIMER.
- DO NOT PAINT THE FACE OF ANY FLANGE.
- END CAPS TO BE INSTALLED AFTER HEADER PIPE COMPLETION.



8" HEADER SYSTEM @ 3 1/2" O.C.
 CONCRETE RINK FLOOR

Everything Ice™
www.everything-ice.com
 (888)-543-0921



WALL-MOUNTED DASHER/ FLOOR
 CONCRETE RINK FLOOR

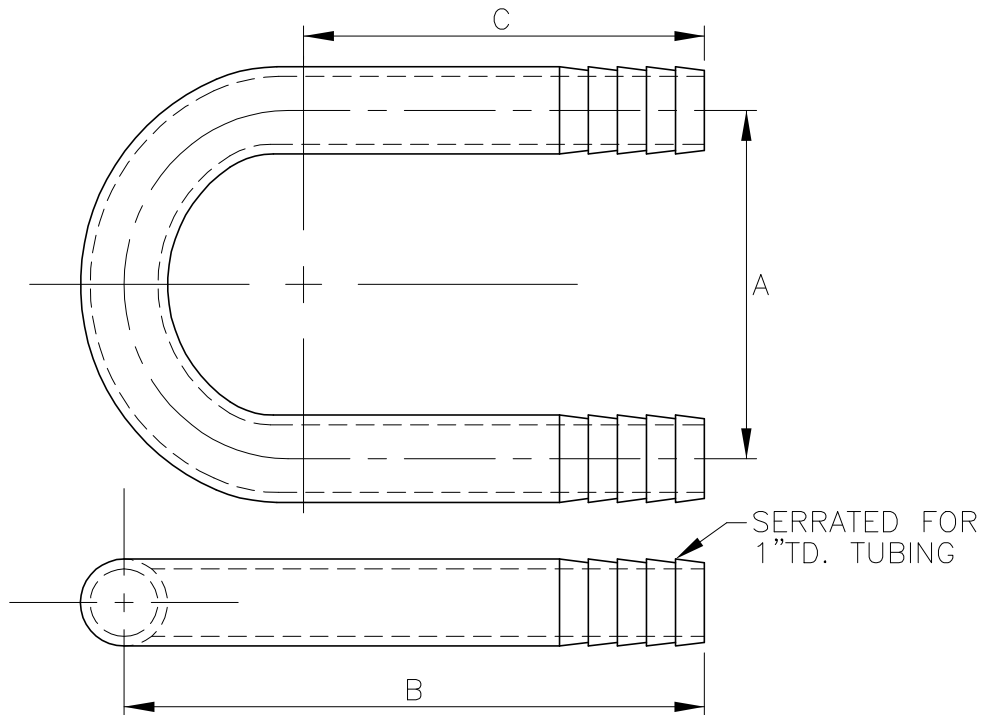


www.everything-ice.com

(888)-543-0921

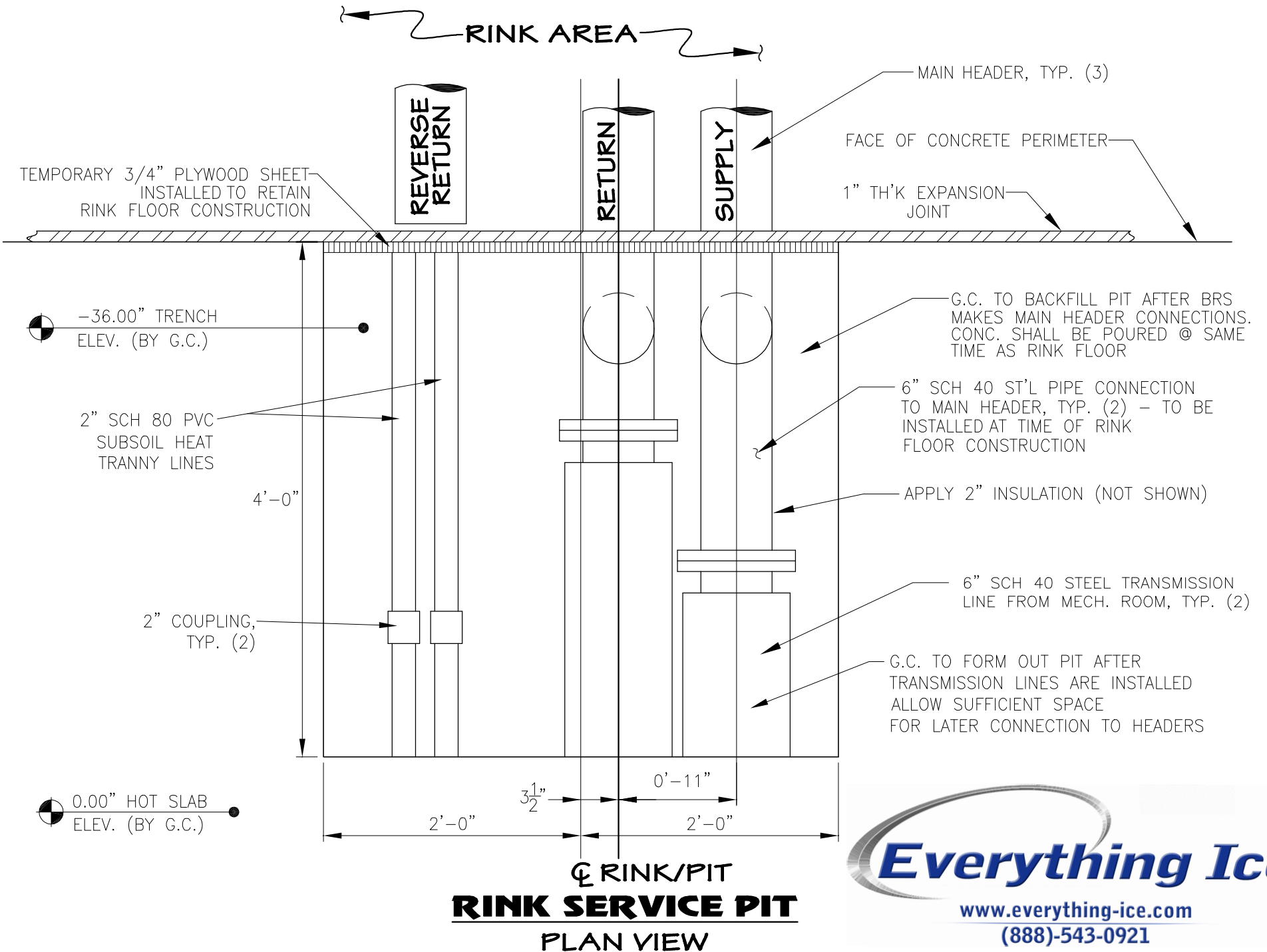
NOTES:
MAT'L: A.B.S. 3/4" SCH:40 PIPE.

TABLE	A	B	C
3" CENTER	3"	5"	3 1/2"
3 1/2" CENTER	3 1/2"	4 7/8"	3 1/8"
4" CENTER	4"	4 3/4"	2 3/4"



RETURN BEND
CONCRETE RINK FLOOR






www.everything-ice.com
 (888)-543-0921